

**TPG**®

**MOTORS & DRIVES**

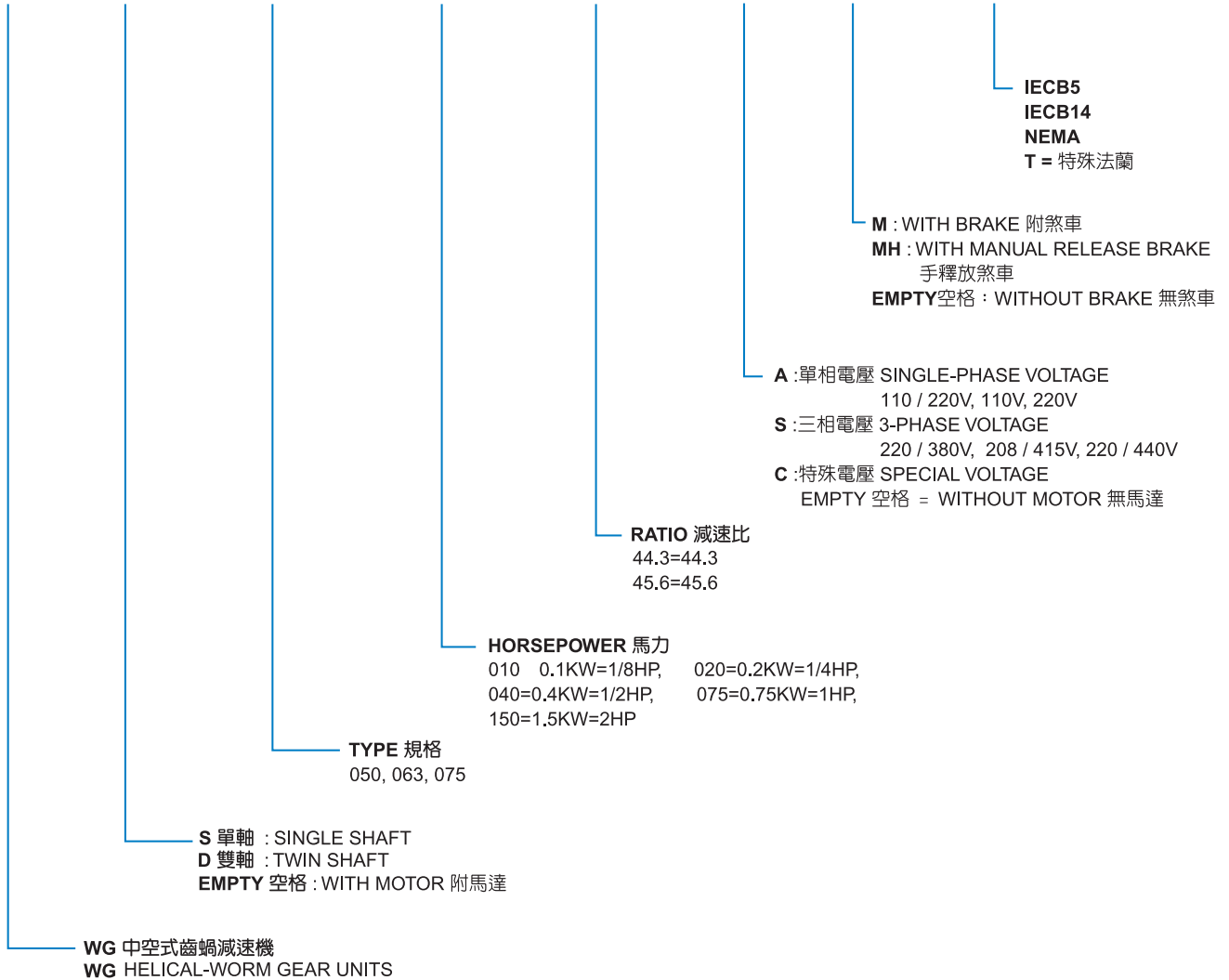
[www.tpg-tw.com](http://www.tpg-tw.com)



**WG 直交軸系列 中空式齒蝸減速機**  
**HELICAL-WORM GEAR UNITS**

**阪神電機**  
**TPG MOTORS & DRIVES**

**WG** - **S** - **050** - **010** - **010** - **S** **M** - **63B5**



註1:因產品改良或其他因素而造成以上數值有所變更，恕不另行通知。  
註2:馬力以4P 50HZ計算。  
註3:煞車為停電煞車，DC90V，手釋放煞車請訂貨時特別註明，加裝AC煞車或電煞車請另洽。  
註4:訂購煞車時請註明使用電壓。  
註5:單相馬達只生產1/8HP, 1/4HP。  
註6:單相馬達訂購時請特別註明頻率、電壓，特殊規格請另洽。  
註7:馬力為可搭配之馬達，實際負荷請參考出力軸轉矩之安全係數做設計或洽詢本公司工程人員。

1. The specifications are subject to be changed by the manufacturer without prior notice.  
2. 4 pole motor at 1450 rpm under 50Hz.  
3. Power off brake(safety brake) at DC90 voltage. Other types brake also available.  
4. Pls advise the input voltage while placing your brake order.  
5. Available power 1/8HP & 1/4HP for single phase motor.  
6. Please advise the voltage & frequency while ordering single phase motor.  
7. The matching motor horsepower of this gear box can be produced by the seller.  
The actual torque value can be found further from the maker.



WGD



WGS



WG



WGM



WGMH



# 直交軸系列-中空式齒蝸減速機 HELICAL-WORM GEAR UNITS

MOTORS & DRIVES

減速比對照表 THE ACTUAL GEAR RATIO FIGURE LIST

標稱減速比與實際減速比及馬力對照表 Actual & Standard Ratio Contrastive Table

Ratio 減速比	Type 型號			HP 馬力							
	WG-050	WG-063	WG-075	2	1 1/2	1	3/4	1/2	1/3	1/4	1/8
44.3			●								
45.0		●									
45.6	●										
48.8			●								
48.9		●									
53.3			●								
66.3	●										
66.4			●								
67.5		●									
68.3	●										
70.0		●									
73.1			●								
73.3		●									
77.5			●								
80.0			●								
88.6			●								
90.0		●									
91.1	●										
97.5			●								
97.8		●									
99.4	●										
105.0		●									
106.7			●								
110.7			●								
112.5		●									
113.9	●										
116.3			●								
121.9			●								
122.2		●									
132.5	●										
132.9			●								
133.3			●								
135.0		●									
136.7	●										
140.0		●									
146.3			●								

Ratio 減速比	Type 型號			HP 馬力							
	WG-050	WG-063	WG-075	2	1 1/2	1	3/4	1/2	1/3	1/4	1/8
146.7		●									
155.0			●								
160.0			●								
165.6	●										
175.0		●									
177.1			●								
180.0		●									
182.2	●										
193.8			●								
195.0			●								
195.6		●									
198.8	●										
210.0		●									
213.3			●								
221.4			●								
225.0		●									
227.8	●										
232.5			●								
243.8			●								
244.4		●									
265.0	●										
265.7			●								
266.7			●								
270.0		●									
273.3	●										
280.0		●									
292.5			●								
293.3		●									
310.0			●								
320.0			●								
331.3	●										
350.0		●									
387.5			●								
397.5	●										
420.0		●									
465.0			●								

註：1.因產品改良或其他因素而造成以上數值有所變更，恕不另行通知。  
 2.馬力為可搭配之馬達，實際負荷請參考出力軸轉矩之安全係數做設計或洽詢本公司工程人員。  
 3.1/3HP, 3/4HP, 1/2HP只適用於WGS及WGD型減速機，馬達直結式減速機不在此三種馬力。

1.The specifications are subject to be changed by the manufacturer without prior notice.  
 2. The matching motor horsepower of this gear box can be produced by the seller.  
 The actual torque value can be found further from the maker.  
 3. 1/3HP, 3/4HP & 1-1/2HP motors are not available for this series in TPG current line.

KW 馬力	出力軸實際轉速 Output Speed		出力軸扭矩 Output Torque		RATIO 減速比	TYPE 型號
	50HZ	60HZ	N.m	s.f.		
0.10KW (50HZ)	21.9	26.4	35	2.4	66.3	WG -050
	14.6	17.6	49	1.8	99.4	
	10.9	13.2	62	1.2	132.5	
	8.8	10.6	73	0.9	165.6	
	7.3	8.8	80	1.1	198.8	
	5.5	6.6	97	0.8	265.0	
	4.4	5.3	111	0.6	331.3	
	3.6	4.4	123	0.5	397.5	
0.12KW (60HZ)	20.7	25.0	38	4.2	70.0	WG -063
	13.8	16.7	53	3.0	105.0	
	10.4	12.5	66	2.2	140.0	
1/8HP	8.3	10.0	79	1.6	175.0	WG -063
	6.9	8.3	86	1.9	210.0	
	5.2	6.3	105	1.4	280.0	
0.18KW (50HZ)	4.1	5.0	121	1.1	350.0	WG -075
	3.5	4.2	134	0.9	420.0	
	18.7	22.6	42	6.0	77.5	
	12.5	15.1	59	4.3	116.3	
	9.4	11.3	75	3.3	155.0	
	7.5	9.0	90	2.4	193.8	
	6.2	7.5	99	2.7	232.5	
	4.7	5.6	121	2.0	310.0	
	3.7	4.5	139	1.5	387.5	
	3.1	3.8	156	1.3	465.0	
	0.22KW (60HZ)	21.9	26.4	64	1.4	
14.6		17.6	88	1.0	99.4	
10.9		13.2	111	0.7	132.5	
8.8		10.6	131	0.5	165.6	
7.3		8.8	143	0.6	198.8	
5.5		6.6	174	0.4	265.0	
4.4		5.3	199	0.3	331.3	
3.6		4.4	221	0.3	397.5	
0.37KW (50HZ)	20.7	25.0	68	2.3	70.0	WG -063
	13.8	16.7	95	1.7	105.0	
	10.4	12.5	120	1.2	140.0	
1/4HP	8.3	10.0	142	0.9	175.0	WG -063
	6.9	8.3	156	1.0	210.0	
	5.2	6.3	190	0.8	280.0	
0.44KW (50HZ)	4.1	5.0	218	0.6	350.0	WG -075
	3.5	4.2	242	0.5	420.0	
	18.7	22.6	76	3.4	77.5	
	12.5	15.1	107	2.4	116.3	
	9.4	11.3	135	1.8	155.0	
	7.5	9.0	161	1.3	193.8	
	6.2	7.5	178	1.5	232.5	
	4.7	5.6	217	1.1	310.0	
	3.7	4.5	251	0.8	387.5	
	3.1	3.8	280	0.7	465.0	

KW 馬力	出力軸實際轉速 Output Speed		出力軸扭矩 Output Torque		RATIO 減速比	TYPE 型號		
	50HZ	60HZ	N.m	s.f.				
0.25KW (50HZ)	31.8	38.4	62	1.2	45.6	WG -050		
	21.2	25.6	87	0.9	68.3			
	15.9	19.2	110	0.6	91.1			
	12.7	15.4	130	0.5	113.9			
	10.6	12.8	144	0.5	136.7			
	8.0	9.6	175	0.4	182.2			
	6.4	7.7	201	0.3	227.8			
	5.3	6.4	223	0.3	273.3			
	0.30KW (60HZ)	29.7	35.8	67	2.1		48.9	WG -063
		19.8	23.9	95	1.5		73.3	
14.8		17.9	120	1.1	97.8			
1/3HP	11.9	14.3	143	0.8	122.2	WG -063		
	9.9	11.9	158	0.9	146.7			
	7.4	8.9	194	0.7	195.6			
0.37KW (50HZ)	5.9	7.2	224	0.5	244.4	WG -075		
	4.9	6.0	250	0.4	293.3			
	27.2	32.8	74	3.1	53.3			
	18.1	21.9	105	2.2	80.0			
	13.6	16.4	134	1.7	106.7			
	10.9	13.1	160	1.2	133.3			
	9.1	10.9	177	1.4	160.0			
	6.8	8.2	219	1.0	213.3			
	5.4	6.6	254	0.8	266.7			
	4.5	5.5	285	0.6	320.0			
	0.44KW (60HZ)	31.8	38.4	92	0.8		45.6	WG -050
21.2		25.6	129	0.6	68.3			
15.9		19.2	162	0.4	91.1			
12.7		15.4	193	0.3	113.9			
10.6		12.8	213	0.4	136.7			
8.0		9.6	259	0.3	182.2			
6.4		7.7	298	0.2	227.8			
5.3		6.4	330	0.2	273.3			
0.55KW (50HZ)	29.7	35.8	100	1.4	48.9	WG -063		
	19.8	23.9	140	1.0	73.3			
	14.8	17.9	178	0.7	97.8			
1/2HP	11.9	14.3	212	0.6	122.2	WG -063		
	9.9	11.9	233	0.6	146.7			
	7.4	8.9	286	0.5	195.6			
0.75KW (50HZ)	5.9	7.2	332	0.4	244.4	WG -075		
	4.9	6.0	370	0.3	293.3			
	27.2	32.8	110	2.1	53.3			
	18.1	21.9	155	1.5	80.0			
	13.6	16.4	198	1.1	106.7			
	10.9	13.1	237	0.8	133.3			
	9.1	10.9	262	0.9	160.0			
	6.8	8.2	323	0.7	213.3			
	5.4	6.6	376	0.5	266.7			
	4.5	5.5	422	0.4	320.0			

註：1.因產品改良或其他因素而造成以上數值有所變更，恕不另行通知。  
2.馬力為可搭配之馬達，實際負荷請參考出力軸轉矩之安全係數做設計或洽詢本公司工程人員。  
3.1/3HP, 3/4HP, 1/2HP只適用於WGS及WGD型減速機，馬達直結式減速機不在此三種馬力。

1. The specifications are subject to be changed by the manufacturer without prior notice.  
2. The matching motor horsepower of this gear box can be produced by the seller.  
The actual torque value can be found further from the maker.  
3. 1/3HP, 3/4HP & 1-1/2HP motors are not available for this series in TPG current line.

KW 馬力	出力軸實際轉速 Output Speed		出力軸扭矩 Output Torque		RATIO 減速比	TYPE 型號
	50HZ	60HZ	N.m	s.f.		
0.55KW (50HZ)	32.2	38.9	137	1.0	45.0	WG -063
	21.5	25.9	192	0.7	67.5	
	16.1	19.4	244	0.5	90.0	
	12.9	15.6	291	0.4	112.5	
	10.7	13.0	322	0.4	135.0	
	8.1	9.7	395	0.3	180.0	
	6.4	7.8	457	0.3	225.0	
	5.4	6.5	512	0.2	270.0	
0.66KW (60HZ)	29.7	35.9	150	1.5	48.8	WG -075
	19.8	23.9	212	1.1	73.1	
	14.9	17.9	270	0.8	97.5	
	11.9	14.4	323	0.6	121.9	
	9.9	12.0	359	0.7	146.3	
	7.4	9.0	443	0.5	195.0	
	5.9	7.2	516	0.4	243.8	
	5.0	6.0	579	0.3	292.5	
0.75KW (50HZ)	32.2	38.9	187	0.8	45.0	WG -063
	21.5	25.9	262	0.5	67.5	
	16.1	19.4	333	0.4	90.0	
	12.9	15.6	397	0.2	112.5	
	10.7	13.0	439	0.3	135.0	
	8.1	9.7	539	0.2	180.0	
	6.4	7.8	624	0.2	225.0	
	5.4	6.5	698	0.2	270.0	
0.90KW (60HZ)	29.7	35.9	204	1.1	48.8	WG -075
	19.8	23.9	289	0.8	73.1	
	14.9	17.9	368	0.6	97.5	
	11.9	14.4	441	0.4	121.9	
	9.9	12.0	489	0.5	146.3	
	7.4	9.0	604	0.4	195.0	
	5.9	7.2	703	0.3	243.8	
	5.0	6.0	789	0.2	292.5	
1HP	32.7	39.5	274	0.8	44.3	WG -075
	21.8	26.3	387	0.6	66.4	
	16.4	19.8	494	0.4	88.6	
	13.1	15.8	591	0.3	110.7	
	10.9	13.2	657	0.3	132.9	
	8.2	9.9	812	0.3	177.1	
	6.5	7.9	947	0.2	221.4	
	5.5	6.6	1063	0.2	265.7	
1.10KW (50HZ)	32.7	39.5	373	0.6	44.3	WG -075
	21.8	26.3	528	0.4	66.4	
	16.4	19.8	674	0.3	88.6	
	13.1	15.8	806	0.2	110.7	
	10.9	13.2	897	0.3	132.9	
	8.2	9.9	1108	0.2	177.1	
	6.5	7.9	1291	0.1	221.4	
	5.5	6.6	1449	0.1	265.7	
1.30KW (60HZ)	32.7	39.5	373	0.6	44.3	WG -075
	21.8	26.3	528	0.4	66.4	
	16.4	19.8	674	0.3	88.6	
	13.1	15.8	806	0.2	110.7	
	10.9	13.2	897	0.3	132.9	
	8.2	9.9	1108	0.2	177.1	
	6.5	7.9	1291	0.1	221.4	
	5.5	6.6	1449	0.1	265.7	
1 1/2HP	32.7	39.5	373	0.6	44.3	WG -075
	21.8	26.3	528	0.4	66.4	
	16.4	19.8	674	0.3	88.6	
	13.1	15.8	806	0.2	110.7	
	10.9	13.2	897	0.3	132.9	
	8.2	9.9	1108	0.2	177.1	
	6.5	7.9	1291	0.1	221.4	
	5.5	6.6	1449	0.1	265.7	

## HELICAL WORM GEAR UNITS



註：1. 因產品改良或其他因素而造成以上數值有所變更，恕不另行通知。  
2. 馬力為可搭配之馬達，實際負荷請參考出力軸轉矩之安全係數做設計或洽詢本公司工程人員。  
3. 1/3HP, 3/4HP, 1/2HP只適用於WGS及WGD型減速機，馬達直結式減速機不在此三種馬力。

1. The specifications are subject to be changed by the manufacturer without prior notice.  
2. The matching motor horsepower of this gear box can be produced by the seller.  
The actual torque value can be found further from the maker.  
3. 1/3HP, 3/4HP & 1-1/2HP motors are not available for this series in TPG current line.



# 直交軸系列-中空式齒蝸減速機 HELICAL-WORM GEAR UNITS

MOTORS & DRIVES

性能表 PERFORMANCE DATA TABLE

## WG-050 性能表 Performance Data Table

Input Speed	1750				1450				1150				950				IEC Flange Size			
	Output Torque	Efficiency	Output Speed	KW	Output Torque	Efficiency	Output Speed	KW	Output Torque	Efficiency	Output Speed	KW	Output Torque	Efficiency	Output Speed	KW				
																	N.m	%	r.p.m.	N.m
45.6	73	84	38.4	0.35	77	83	31.8	0.31	83	82	25.2	0.27	87	81	20.9	0.24				
66.3	82	82	26.4	0.28	86	81	21.9	0.24	92	80	25.2	0.21	96	79	20.9	0.18				
68.3	73	78	25.6	0.25	77	77	21.2	0.22	83	76	16.8	0.19	87	75	13.9	0.17				
91.1	65	74	19.2	0.18	68	73	15.9	0.16	73	71	16.8	0.13	76	70	13.9	0.12				
99.4	82	76	17.6	0.20	86	75	14.6	0.18	90	74	12.6	0.15	94	73	10.4	0.13				
113.9	59	71	15.4	0.13	62	69	12.7	0.12	66	68	10.1	0.10	69	67	8.3	0.09				
132.5	72	72	13.2	0.14	75	71	10.9	0.12	79	70	10.1	0.10	83	69	8.3	0.09				
136.7	75	65	12.8	0.16	79	64	10.6	0.14	84	62	8.4	0.12	87	61	7.0	0.11				
165.6	65	68	10.6	0.11	68	67	8.8	0.09	71	66	8.4	0.08	74	65	7.0	0.07				
182.2	66	60	9.6	0.11	70	58	8.0	0.10	74	56	6.3	0.09	76	55	5.2	0.08				
198.8	83	62	8.8	0.12	86	61	7.3	0.11	90	60	6.3	0.09	94	58	5.2	0.08				
227.8	65	55	7.7	0.09	65	54	6.4	0.08	68	52	5.0	0.07	70	51	4.2	0.06				
265.0	73	57	6.6	0.09	76	55	5.5	0.08	78	54	5.0	0.07	82	53	4.2	0.06				
273.3	56	51	6.4	0.07	59	50	5.3	0.07	61	48	4.3	0.06	64	47	3.6	0.06				
331.3	67	52	5.3	0.07	69	51	4.4	0.06	72	50	4.2	0.05	75	48	3.5	0.05				
397.5	61	48	4.4	0.06	63	47	3.6	0.05	66	46	2.9	0.04	68	44	2.4	0.04				

## WG-063 性能表 Performance Data Table

Input Speed	1750				1450				1150				950				IEC Flange Size			
	Output Torque	Efficiency	Output Speed	KW	Output Torque	Efficiency	Output Speed	KW	Output Torque	Efficiency	Output Speed	KW	Output Torque	Efficiency	Output Speed	KW				
																	N.m	%	r.p.m.	N.m
45.0	132	85	38.9	0.64	140	84	32.2	0.56	150	83	25.6	0.48	159	82	21.1	0.43				
48.9	136	84	35.8	0.60	144	84	29.7	0.53	154	83	23.6	0.46	162	82	19.4	0.40				
67.5	133	80	25.9	0.45	140	79	21.5	0.40	149	79	17.0	0.34	158	76	14.1	0.31				
70.0	151	83	25.0	0.48	159	82	20.7	0.42	170	81	16.4	0.36	178	80	13.6	0.32				
73.3	136	79	23.9	0.43	143	78	19.8	0.38	154	77	15.7	0.33	162	76	13.0	0.29				
90.0	122	76	19.4	0.33	129	75	16.1	0.29	137	74	12.8	0.25	144	72	10.6	0.22				
97.8	126	74	17.9	0.32	132	75	14.8	0.28	140	73	11.8	0.24	147	72	9.7	0.21				
105.0	151	78	16.7	0.34	159	76	13.8	0.30	168	75	11.0	0.26	174	74	9.0	0.22				
112.5	110	73	15.6	0.25	115	72	12.9	0.22	122	70	10.2	0.19	128	69	8.4	0.17				
122.2	116	72	14.3	0.24	117	71	11.9	0.21	125	69	9.4	0.18	131	68	7.8	0.16				
135.0	138	67	13.0	0.28	144	66	10.7	0.25	152	64	8.5	0.21	160	63	7.0	0.19				
140.0	138	73	12.5	0.25	145	72	10.4	0.22	153	71	8.2	0.19	158	70	6.8	0.16				
146.7	141	67	11.9	0.26	147	65	9.9	0.23	156	64	7.8	0.20	163	62	6.5	0.18				
175.0	123	70	10.0	0.18	129	68	8.3	0.16	135	67	6.6	0.14	140	66	5.4	0.12				
180.0	125	62	9.7	0.21	131	61	8.1	0.18	138	59	6.4	0.16	144	57	5.3	0.14				
195.6	128	61	8.9	0.20	134	60	7.4	0.17	141	58	5.9	0.15	147	57	4.9	0.13				
210.0	153	64	8.3	0.21	161	63	6.9	0.19	168	61	5.5	0.16	174	60	4.5	0.14				
225.0	114	57	7.8	0.16	119	56	6.4	0.14	125	54	5.1	0.12	130	53	4.2	0.11				
244.4	116	57	7.2	0.15	121	56	5.9	0.13	127	54	4.7	0.12	132	52	3.9	0.10				
270.0	106	54	6.5	0.13	110	52	5.4	0.12	116	50	4.3	0.10	121	49	3.5	0.09				
280.0	139	59	6.3	0.16	145	57	5.2	0.14	151	56	4.1	0.12	156	55	3.4	0.10				
293.3	108	53	6.0	0.13	112	52	4.9	0.11	118	50	3.9	0.10	123	48	3.2	0.09				
350.0	126	54	5.0	0.12	130	53	4.1	0.11	136	51	3.3	0.11	141	50	2.7	0.08				
420.0	116	50	4.2	0.10	121	49	3.5	0.09	126	47	2.7	0.08	130	46	2.3	0.07				

註：1.因產品改良或其他因素而造成以上數值有所變更，恕不另行通知。

2.馬力為可搭配之馬達，實際負荷請參考出力軸轉矩之安全係數做設計或洽詢本公司工程人員。

3.1/3HP, 3/4HP, 1/2HP只適用於WGS及WGD型減速機，馬達直結式減速機不在此三種馬力。

1.The specifications are subject to be changed by the manufacturer without prior notice.

2. The matching motor horsepower of this gear box can be produced by the seller.

The actual torque value can be found further from the maker.

3. 1/3HP, 3/4HP & 1-1/2HP motors are not available for this series in TPG current line.



# 直交軸系列-中空式齒蝸減速機 HELICAL-WORM GEAR UNITS

MOTORS & DRIVES

性能表 PERFORMANCE DATA TABLE

## WG-075 性能表 Performance Data Table

Input Speed	1750				1450				1150				950				IEC Flange Size			
	Output Torque	Efficiency	Output Speed	KW	Output Torque	Efficiency	Output Speed	KW	Output Torque	Efficiency	Output Speed	KW	Output Torque	Efficiency	Output Speed	KW				
	N.m	%	r.p.m.		N.m	%	r.p.m.		N.m	%	r.p.m.		N.m	%	r.p.m.		63	71	80	90
44.3	206	85.9	39.5	0.99	217	85	32.7	0.87	233	84	39.5	0.75	245	84	32.7	0.66				
48.8	211	85.6	35.9	0.93	224	85	29.7	0.82	239	84	35.9	0.70	252	83	29.7	0.62				
53.3	217	85.3	32.8	0.87	230	85	27.2	0.77	245	84	32.8	0.66	260	83	27.2	0.59				
66.4	210	81.3	26.3	0.71	220	81	21.8	0.62	235	79	26.3	0.54	248	79	21.8	0.47				
73.1	215	80.9	23.9	0.67	226	80	19.8	0.59	241	79	23.9	0.50	254	78	19.8	0.44				
77.5	241	84	22.6	0.68	256	83	18.7	0.60	273	82	22.6	0.52	284	81	18.7	0.45				
80.0	220	80.5	21.9	0.63	232	80	18.1	0.55	247	79	21.9	0.47	260	77	18.1	0.42				
88.6	201	78	19.8	0.53	213	77	16.4	0.47	225	76	19.8	0.40	36	75	16.4	0.36				
97.5	207	77.5	17.9	0.50	218	77	14.9	0.44	231	75	17.9	0.38	242	74	14.9	0.33				
106.7	213	77	16.4	0.47	225	76	13.6	0.42	236	75	16.4	0.36	248	73	13.6	0.31				
110.7	178	74.9	15.8	0.39	188	74	13.1	0.35	197	73	15.8	0.30	208	71	13.1	0.26				
116.3	244	78.8	15.1	0.49	257	78	12.5	0.43	271	76	15.1	0.37	282	76	12.5	0.32				
121.9	183	74.3	14.4	0.37	192	73	11.9	0.33	202	72	14.4	0.28	213	70	11.9	0.25				
132.9	220	69.5	13.2	0.44	230	68	10.9	0.38	242	67	13.2	0.33	254	66	10.9	0.29				
133.3	187	73.8	13.1	0.35	195	73	10.9	0.31	207	71	13.1	0.26	217	70	10.9	0.23				
146.3	224	69	12.0	0.41	235	68	9.9	0.36	248	66	12.0	0.31	260	65	9.9	0.27				
155.0	234	74.9	11.3	0.37	245	74	9.4	0.33	254	66	10.9	0.29	265	64	9.1	0.26				
160.0	229	68.3	10.9	0.38	240	67	9.1	0.34	258	72	11.3	0.28	267	72	9.4	0.24				
177.1	205	64.6	9.9	0.33	215	63	8.2	0.29	226	62	9.9	0.25	236	60	8.2	0.22				
193.8	205	71.4	9.0	0.27	215	70	7.5	0.24	225	69	9.0	0.20	233	68	7.5	0.18				
195.0	210	63.9	9.0	0.31	220	63	7.4	0.27	231	61	9.0	0.23	241	59	7.4	0.21				
213.3	215	63.3	8.2	0.29	224	62	6.8	0.26	236	60	8.2	0.22	245	59	6.8	0.19				
221.4	182	60.4	7.9	0.25	190	59	6.5	0.22	199	58	7.9	0.19	207	56	6.5	0.17				
232.5	251	66	7.5	0.30	263	64	6.2	0.27	275	63	7.5	0.23	283	62	6.2	0.20				
243.8	186	59.6	7.2	0.23	194	58	5.9	0.21	203	57	7.2	0.18	211	55	5.9	0.16				
265.7	172	56.6	6.6	0.21	179	55	5.5	0.19	187	54	6.6	0.16	195	52	5.5	0.14				
266.7	190	59	6.6	0.22	197	58	5.4	0.19	207	56	6.6	0.17	215	54	5.4	0.15				
292.5	176	55.8	6.0	0.20	183	55	5.0	0.17	191	53	6.0	0.15	200	51	5.0	0.13				
310.0	234	60.6	5.6	0.23	243	59	4.7	0.20	254	58	5.6	0.17	262	57	4.7	0.15				
320.0	179	55.2	5.5	0.19	185	54	4.5	0.16	195	52	5.5	0.14	203	50	4.5	0.13				
387.5	205	56.1	4.5	0.17	213	55	3.7	0.15	223	53	4.5	0.13	230	52	3.7	0.11				
465.0	193	52.2	3.8	0.15	201	51	3.1	0.13	209	49	3.8	0.11	216	48	3.1	0.10				

註：1.因產品改良或其他因素而造成以上數值有所變更，恕不另行通知。

2.馬力為可搭配之馬達，實際負荷請參考出力軸轉矩之安全係數做設計或洽詢本公司工程人員。

3.1/3HP, 3/4HP, 1/2HP只適用於WGS及WGD型減速機，馬達直結式減速機不在此三種馬力。

1.The specifications are subject to be changed by the manufacturer without prior notice.

2. The matching motor horsepower of this gear box can be produced by the seller.

The actual torque value can be found further from the maker.

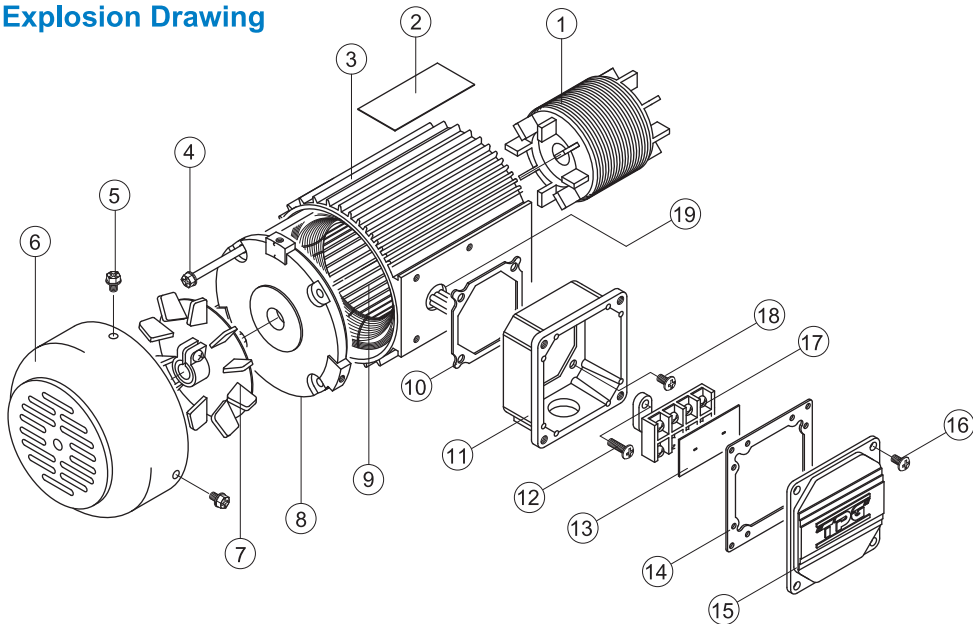
3. 1/3HP, 3/4HP & 1-1/2HP motors are not available for this series in TPG current line.

### 三相馬達組零件組 Part List of 3 Phase Motor

順號 NO.	品名	Description	順號 NO.	品名	Description	順號 NO.	品名	Description
1	轉子	Armature	8	馬達後蓋	Front endplate	15	接線盒上蓋	Conduit box lid
2	馬達銘牌	Nameplate	9	定子	Field	16	圓頭十字螺絲	Round head screw
3	馬達筒	House	10	防水墊片小	Conduit box gasket	17	接線座	Terminal block
4	馬達長螺絲	Long Screw	11	接線盒底座	Conduit box	18	圓頭十字螺絲	Round head screw
5	六角十字螺絲	Screw	12	圓頭十字螺絲	Round head screw	19	出線珠	Cord outlet
6	風蓋	Fan cover	13	接線座蓋	Terminal block lid			
7	風葉	Fan blade	14	防水墊片大	Conduit box gasket			

### 三相馬達組分解圖

#### 3 Phase Motor Explosion Drawing



### 三相馬達結線圖 3 Phase Motor Connection Diagram

200/400V, 220/380V		208/415V, 220/440V, 230/460V	
△結線圖 200, 220, 240V △Connection 200, 220, 240V	Y結線圖 380, 400V Y Connection 380, 400V	YY結線圖 208, 220, 230V YY Connection 208, 220, 230V	Y結線圖 415, 440, 460V Y Connection 415, 440, 460V

註：1.因產品改良或其他因素而造成以上數值有所變更，恕不另行通知。

Remark: 1.The specifications are subject to be changed by the manufacturer without prior notice.

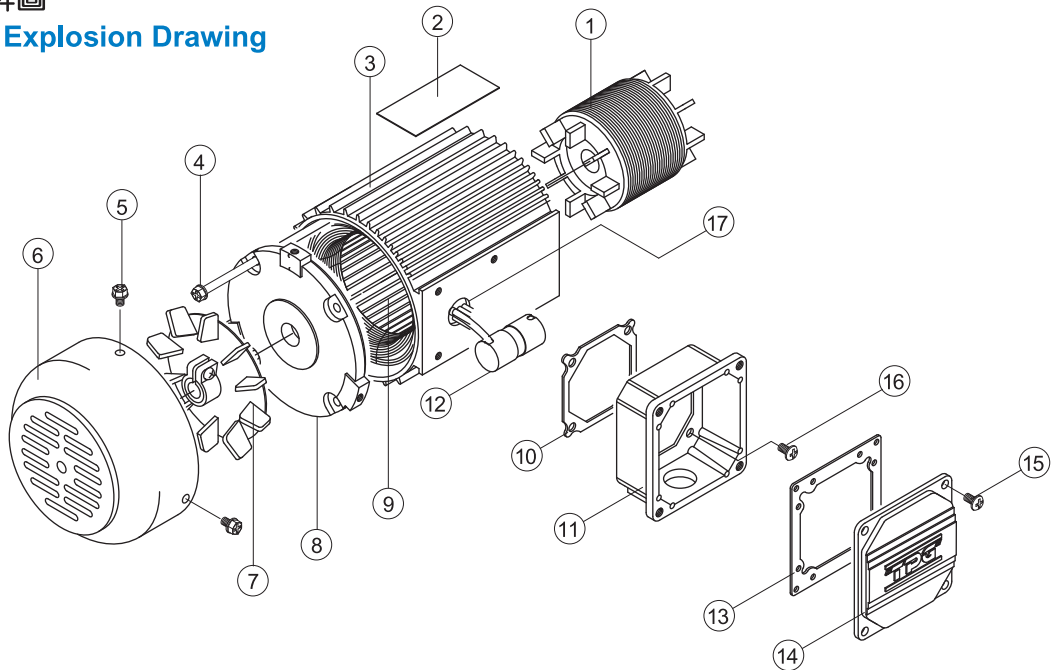


## 單相馬達組零件組 Part List of 1 Phase Motor

順號 NO.	品名	Description	順號 NO.	品名	Description	順號 NO.	品名	Description
1	轉子	Armature	7	風葉	Fan blade	13	防水墊片大	Conduit box gasket
2	馬達銘牌	Nameplate	8	馬達後蓋	Front endplate	14	接線盒上蓋	Conduit box lid
3	馬達筒	House	9	定子	Field	15	圓頭十字螺絲	Round head screw
4	馬達長螺絲	Long Screw	10	防水墊片小	Conduit box gasket	16	圓頭十字螺絲	Round head screw
5	六角十字螺絲	Screw	11	接線盒底座	Conduit box	17	出線珠	Cord outlet
6	風蓋	Fan cover	12	電容器	Round head screw			

## 單相馬達組分解圖

### 1 Phase Motor Explosion Drawing



## 單相馬達結線圖 1 Phase Motor Connection Diagram

100/200V, 110/220V, 120/240V, 100V, 110V, 120V, 200V, 220V, 240V, 50HZ, 60HZ, 50/60HZ			
100V, 110V, 120V	200V, 220V, 240V	100V, 110V, 120V, 200V, 220V, 240V	

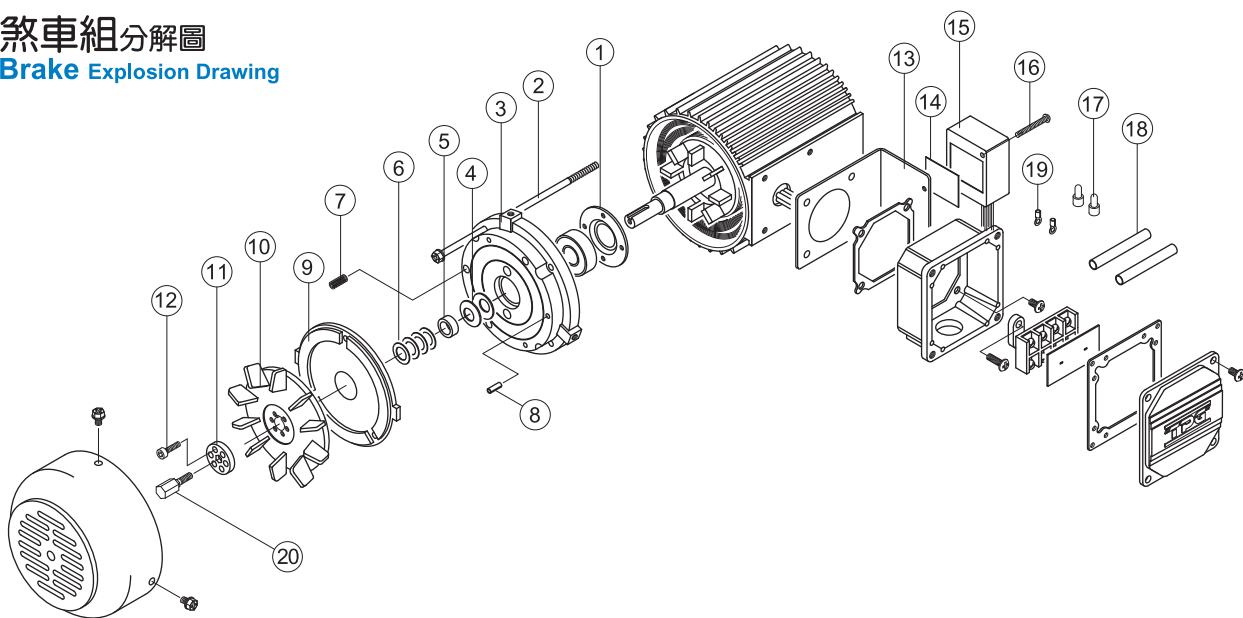
註：1. 單相馬達0.1KW, 0.2KW，馬達為運轉電容起動。  
2. 訂購單相馬達請註明電壓及頻率。

Remark: 1. 0.1KW & 0.2KW single phase motor are started by capacitor.  
2. Please advise the voltage & frequency while ordering single phase motor.

## 煞車組零件表 Part List of Brake

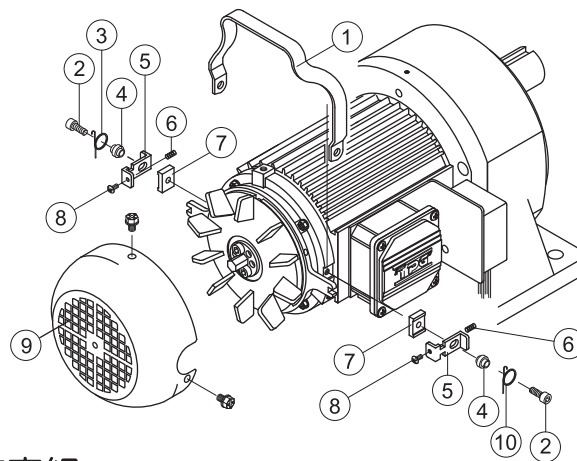
順號 NO.	品名	Description	順號 NO.	品名	Description	順號 NO.	品名	Description
1	軸承華司	Bearing washer	8	空心梢	Nut	15	整流器	Rectifier
2	馬達長螺絲	Motor long screw	9	來令片	Friction	16	整流器螺絲	Screw of rectifier
3	煞車座	Brake seat	10	煞車風葉	Brake blade	17	接線帽	Close~ end connector
4	盤形墊片	Round plate	11	華司	Washer	18	保護管	Vinyl tube
5	厚墊片	Thick washer	12	套筒螺絲	Screw	19	接線端子	Wire adapter
6	薄墊片	Thin washer	13	L型鐵片	L shape metal	20	螺栓	Screw nut
7	彈簧	Spring	14	整流器銘牌	Nameplate of rectifier			

## 煞車組分解圖 Brake Explosion Drawing



## 手釋放煞車組零件表 Part List of Manual Release Brake

順號 NO.	品名	Description
1	把手	Manual handle
2	套筒螺絲	Screw
3	左彈簧	Left spring
4	轉軸	Nut
5	壓板	Bracket
6	彈簧	Spring
7	固定片	Fixed block
8	圓頭十字螺絲	Screw
9	風蓋	Fan cover
10	右彈簧	Right spring

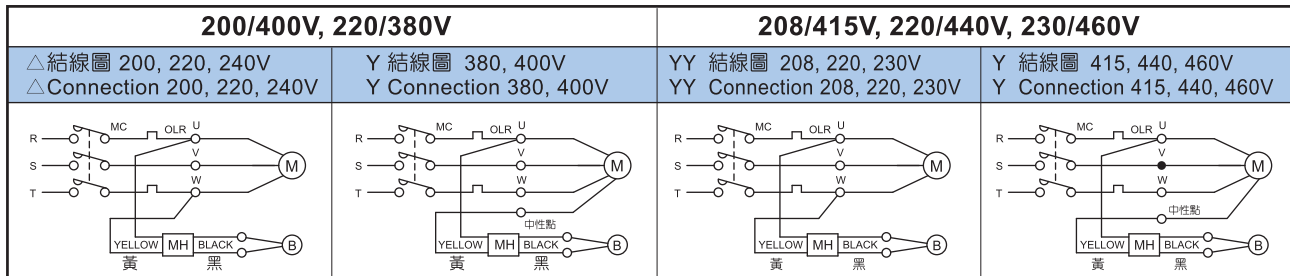


## 手釋放煞車組分解圖 Manual Release Brake Explosion Drawing

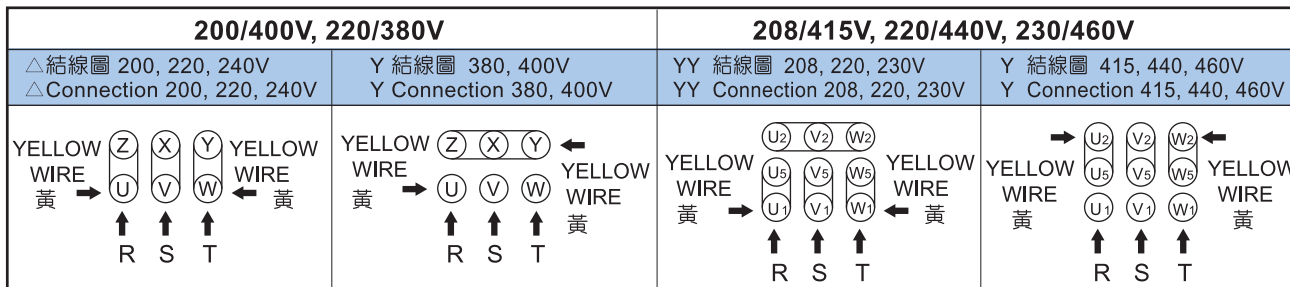
註：1.單相馬達加裝煞車，只生產0.1KW, 0.2KW。  
2.規格外煞車請另洽。  
3.刹車SBV 071沒有7號零件。  
4.專利號：M275320, M275626。

Remarks: 1. For single phase motor, only 0.1KW, 0.2KW can install manual release brake.  
2. Extra brakes available, please consult with the seller.  
3. There is no number 7 part in SBV 071 brake.  
4. PAT No.: M275320, M275626.

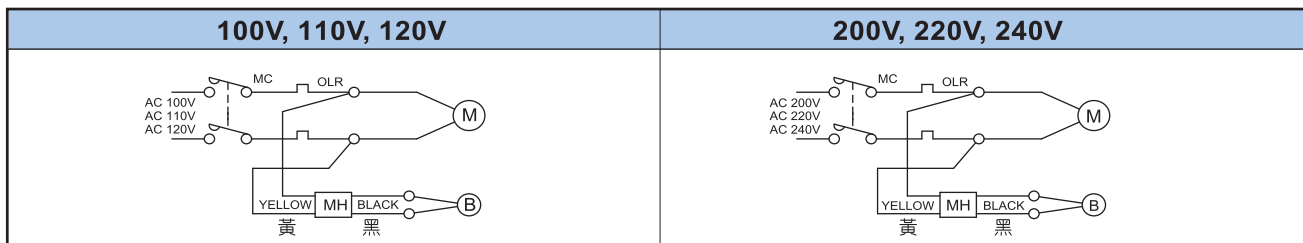
## 三相煞車線路圖 3 Phase Brake Connection



## 三相煞車結線圖 3 Phase Brake Connection



## 單相煞車線路圖 1 Phase Brake Connection



### 煞車特長

- 斷電時運作——無激磁作動煞車,斷電時自動煞車動作。
- 結線容易——整流器裝於馬達外殼上,接交流電源。
- 小型重量輕——加裝煞車所增加馬達長度極小,體積小,重量輕。
- 組裝容易——加裝煞車不需修改馬達心軸,組裝容易。
- 煞車壽命長——來令片材質耐磨性佳,煞車動作正確,調整方便。
- 煞車電壓——三相輸入AC200/208/220V 50/60HZ輸出DC90/108V。  
單相輸入AC100/110V 50/60HZ輸出DC90/108V。

### Brake features:

- Power off activation.....No exciting brake, power off auto braking.
- Easy to connect .....The rectifier is unbolt into the motor house and connect directly to the power source.
- Light weight .....Small cuft.
- Easy to assemble.....Don't need to amend the motor output shaft.
- Long life.....The material of brake lining is wearproof. Brake effectively and easy to adjust.
- Brake voltage.....3 Phase input AC200/208/220V 50/60HZ output DC90/108V.  
1 Phase input AC100/110V 50/60HZ output DC90/108V.

### 間隙調整方法

1. 打開馬達風蓋,拆掉調整螺柱上兩個固定螺絲。
2. 旋轉固定螺柱可調整煞車間隙,每等距約0.2mm。
3. 以厚薄規調整好間隙後,將調整螺柱上四個或六個孔之其中對角兩孔固定,將固定螺絲鎖緊即完成調整間隙動作,其所調整方法及所需間隙以厚薄規為準。
4. 非專業技師禁止調整,於停車中操作。

### The adjust steps:

1. Take off the motor fan cover, by means of loosing two socket screws.
2. Rotate the brake tension screw to adjust brake backlash, turn clockwise direction to decrease the distance, counterclockwise to increase it. Every pitch about 0.2mm.
3. After adjustment backlash thickness measurer, put back the fixed screw at opposite point.
4. Qualified or trained personnel should adjust this brake under the power off condition.

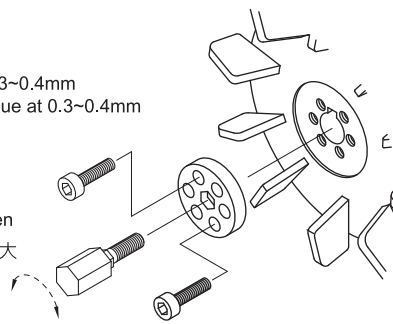
煞車間隙值調整約0.3~0.4mm  
Adjust brake gap value at 0.3~0.4mm

Brake gap tighten

間隙值大

間隙值小

Brake gap loosen



### 煞車間隙調整原因

1. 每當使用一段時間煞車動作不正確時。
2. 至少每年需調整煞車間隙一次。
3. 依使用的頻率多寡,可自行決定調整間隙的次數。
4. 請使用厚薄規調整煞車間隙在0.3~0.4mm之間。

### Brake adjustment need to be done while below situation happened:

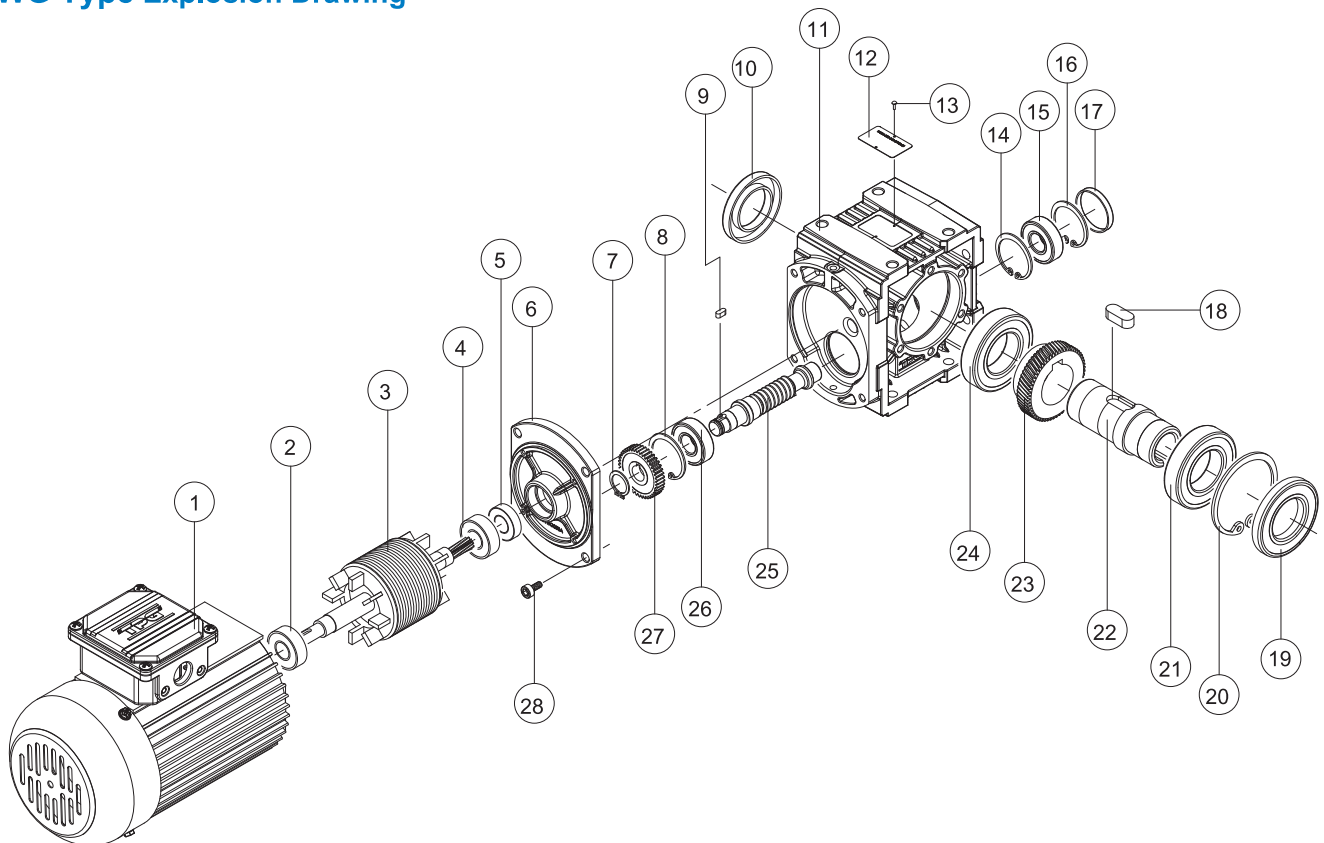
1. Wrong brake action.
2. During annual maintenance.
3. Adjust according to the use frequency, you can decide the time of adjust brake.
4. Please use the thick measurer to adjust the backlash between 0.3mm to 0.4mm.

## WG馬達組零件組 Part List of WG Motor

順號 NO.	品名	Description	順號 NO.	品名	Description	順號 NO.	品名	Description
1	馬達組	Motor assembly	11	齒輪箱	House	21	軸承	Bearing
2	軸承	Bearing	12	銘牌釘	Rivet	22	出力軸	Output shaft
3	馬達心軸	Armature	13	銘牌	Nameplate	23	蝸輪	Worm gear
4	軸承	Bearing	14	內孔扣環	Ring	24	軸承	Bearing
5	油封	Oil seal	15	軸承	Bearing	25	蝸桿	Worm shaft
6	齒輪箱蓋	Lid of gear	16	內孔扣環	Ring	26	軸承	Bearing
7	扣環	Ring	17	油封蓋	Lid of oil seal	27	齒輪	Gear
8	內孔扣環	Ring	18	雙圓鍵	Double round end key	28	套筒螺絲	Screw
9	雙圓鍵	Twin round end key	19	油封	Oil seal			
10	油封	Oil seal	20	內孔扣環	Ring			

## WG TYPE 分解圖

### WG Type Explosion Drawing



註：

1. 因產品改良或其他因素而造成以上數值有所變更，恕不另行通知。
2. 以上分解圖為通用模式，內部零件會因機種不同會有小部份形狀不同。
3. 馬達組及煞車及手釋放煞車零件請參照單獨分解圖。
4. 需要維修零件，請註明機種減速比及零件順號。

Remark：

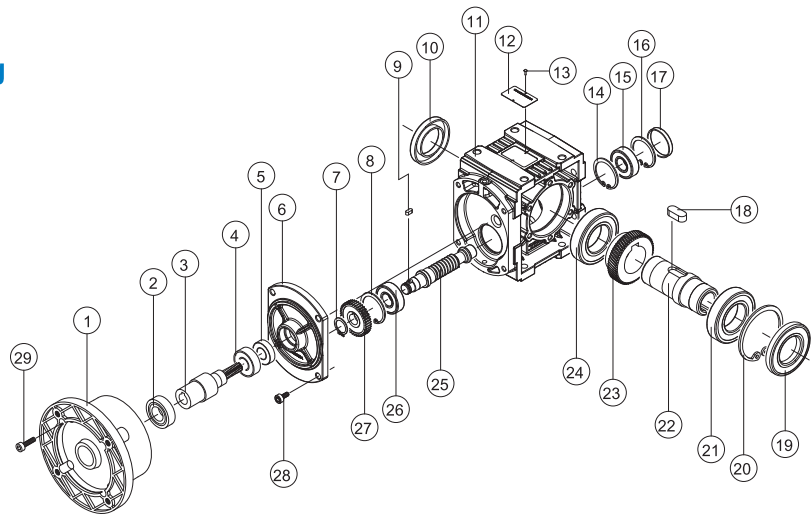
1. The specifications care subject to be changed by the manufacturer without prior notice.
2. Above explosion drawing is the standard one, there will be some different parts due to different model.
3. Motor set, brake & manual release brake explosion drawing will be showed up separately later on.
4. Please mark the part name and full catal. number of TPG if require the repair service from TPG.

## WGS/WGD馬達組零件組 Part List of WGS/WGD Motor

順號 NO.	品名	Description	順號 NO.	品名	Description	順號 NO.	品名	Description
1	S型殼/D型蓋	Input flange	11	齒輪箱	House	21	軸承	Bearing
2	軸承	Bearing	12	銘牌釘	Rivet	22	出力軸	Output shaft
3	S型軸/D型軸	Pinion shaft	13	銘牌	Nameplate	23	蝸輪	Worm gear
4	軸承	Bearing	14	內孔扣環	Ring	24	軸承	Bearing
5	油封	Oil seal	15	軸承	Bearing	25	蝸桿	Worm gear shaft
6	齒輪箱蓋	Lid of gear	16	內孔扣環	Ring	26	軸承	Bearing
7	扣環	Ring	17	油封蓋	Lid of oil seal	27	齒輪	Gear
8	內孔扣環	Ring	18	雙圓鍵	Double round end key	28	套筒螺絲	Screw
9	雙圓鍵	Twin round end key	19	油封	Oil seal	29	套筒螺絲	Screw
10	油封	Oil seal	20	內孔扣環	Ring	30	單圓鍵	Single round end key

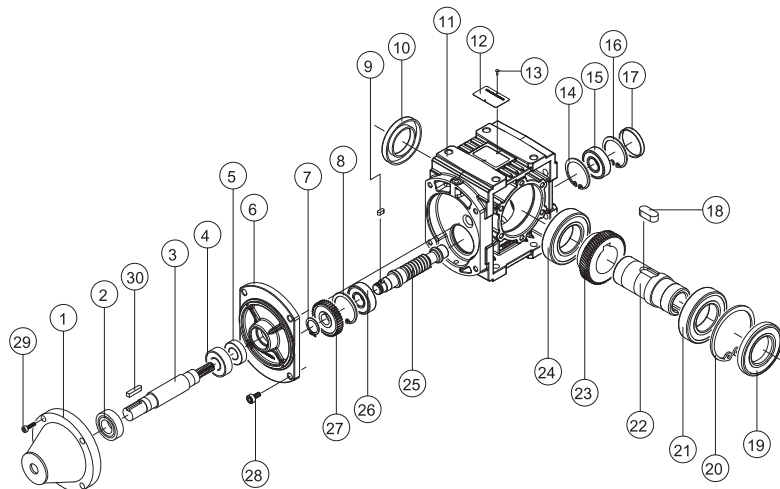
### WGS TYPE 分解圖

#### WGS Type Explosion Drawing



### WGD TYPE 分解圖

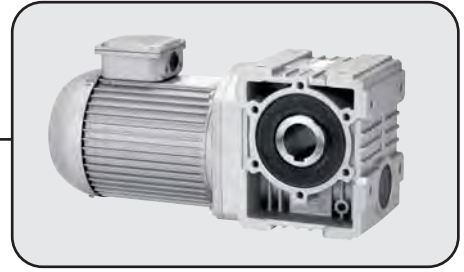
#### WGD Type Explosion Drawing



Remark: :

1. 因產品改良或其他因素而造成以上數值有所變更，恕不另行通知。
2. 以上分解圖為通用模式，內部零件會因機種不同會有小部份形狀不同。
3. 需要維修零件，請註明機種減速比及零件順號。

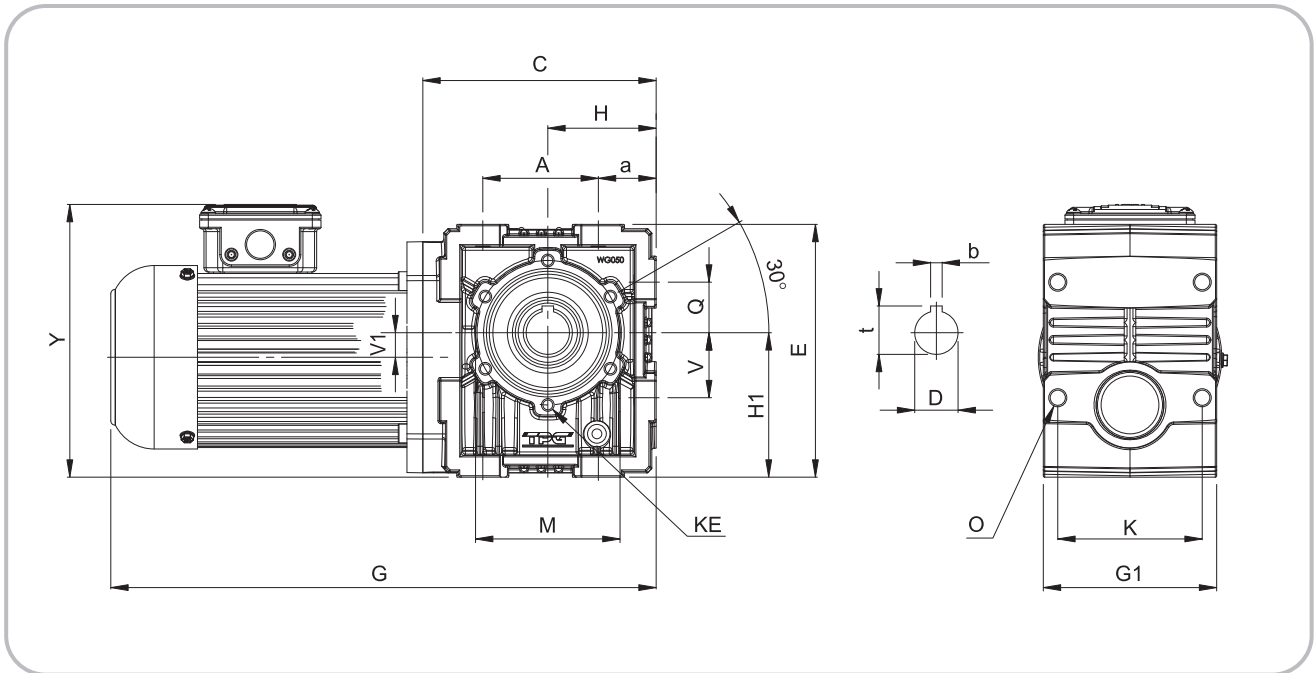
1. The specifications care subject to be changed by the manufacturer without prior notice.
2. Above explosion drawing is the standard one, there will be some different parts due to different model.
3. Please mark the part name and full catal. number of TAG if require the repair service from.TPG.



尺寸表 Dimension

mm

馬達 HP	型式 Type	G	腳架尺寸 FOOT DIMENSION					E	H	H1	a	Y	C	V1	KE	M	出力軸端 OUTPUT SHAFT			
			A	K	V	Q	O										G1	D	t	b
0.1KW	WG-050	347.5	80	100	45	35	M12	175	70	100	40	189	161.5	17	M8	100	120	30	33.5	8
	WG-063	363.5	100	110	55	45	M12	192	80	112	35	190	177.5	28	M10	128	150	40	43.3	12
	WG-075	407.5	130	130	70	60	M14	246	106	140	36	246	230.0	37	M12	155	180	45	48.8	14
0.18KW	WG-050	362.5	80	100	45	35	M12	175	70	100	40	189	161.5	17	M8	100	120	30	33.5	8
	WG-063	378.5	100	110	55	45	M12	192	80	112	35	190	177.5	28	M10	128	150	40	43.3	12
	WG-075	422.5	130	130	70	60	M14	246	106	140	36	246	230.0	37	M12	155	180	45	48.8	14
0.37KW	WG-050	377.5	80	80	45	35	M12	175	70	100	40	189	161.5	17	M8	100	120	30	33.5	8
	WG-063	393.5	100	100	55	45	M12	192	80	112	35	190	177.5	28	M10	128	150	40	43.3	12
	WG-075	437.5	130	130	70	60	M14	246	106	140	36	246	230.0	37	M12	155	180	45	48.8	14
0.75KW	WG-063	415.0	100	100	55	45	M12	192	80	112	35	206	177.5	28	M10	128	150	40	43.3	12
	WG-075	467.5	130	130	70	60	M14	246	106	140	36	246	230.0	37	M12	155	180	45	48.8	14
1.5KW	WG-075	511.5	130	130	70	60	M14	246	106	140	36	246	230.0	37	M12	155	180	45	48.8	14

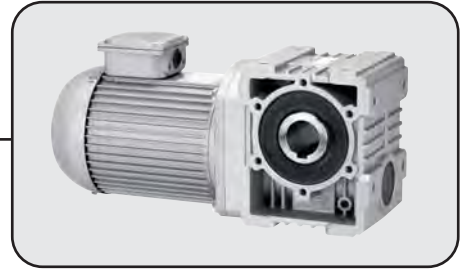


註：

1. 因產品改良或其他因素而造成以上數值有所變更，恕不另行通知。
2. 馬力以4P 50HZ計算。
3. 馬力為可搭配之馬達，實際負荷請參考出力軸轉矩之安全係數做設計或洽詢本公司工程人員

Remark:

1. The specifications are subject to be changed by the manufacturer without prior notice.
2. 4 pole motor at 1450 rpm under 50Hz.
3. The matching motor horsepower of this gear box can be produced by the seller. The actual torque value can be found further from the maker.



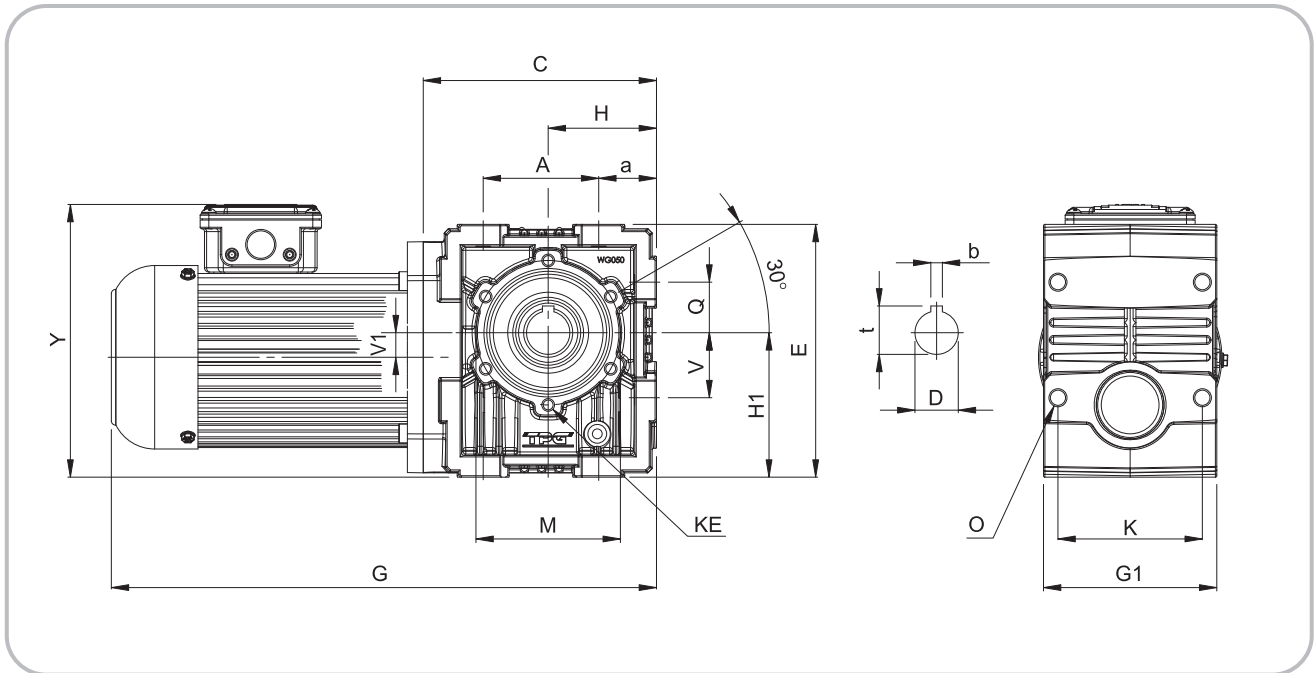
## WG TYPE

單相馬達  
1 - Phase

### 尺寸表 Dimension

mm

馬達 HP	型式 Type	G	腳架尺寸 FOOT DIMENSION					E	H	H1	a	Y	C	V1	KE	M	出力軸端 OUTPUT SHAFT			
			A	K	V	Q	O										G1	D	t	b
0.1KW	WG-050	347.5	80	100	45	35	M12	175	70	100	40	189	161.5	17	M8	100	120	30	33.5	8
	WG-063	363.5	100	110	55	45	M12	192	80	112	35	190	177.5	28	M10	128	150	40	43.3	12
	WG-075	407.5	130	130	70	60	M14	246	106	140	36	246	230.0	37	M12	155	180	45	48.8	14
0.18KW	WG-050	362.5	80	100	45	35	M12	175	70	100	40	189	161.5	17	M8	100	120	30	33.5	8
	WG-063	378.5	100	110	55	45	M12	192	80	112	35	190	177.5	28	M10	128	150	40	43.3	12
	WG-075	422.5	130	130	70	60	M14	246	106	140	36	246	230.0	37	M12	155	180	45	48.8	14

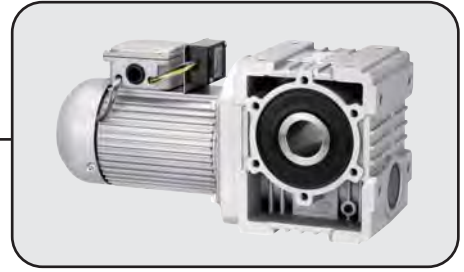


註：

1. 因產品改良或其他因素而造成以上數值有所變更，恕不另行通知。
2. 馬力以4P 50HZ計算。
3. 馬力為可搭配之馬達，實際負荷請參考出力軸轉矩之安全係數做設計或洽詢本公司工程人員

Remark:

1. The specifications are subject to be changed by the manufacturer without prior notice.
2. 4 pole motor at 1450 rpm under 50Hz.
3. The matching motor horsepower of this gear box can be produced by the seller. The actual torque value can be found further from the maker.



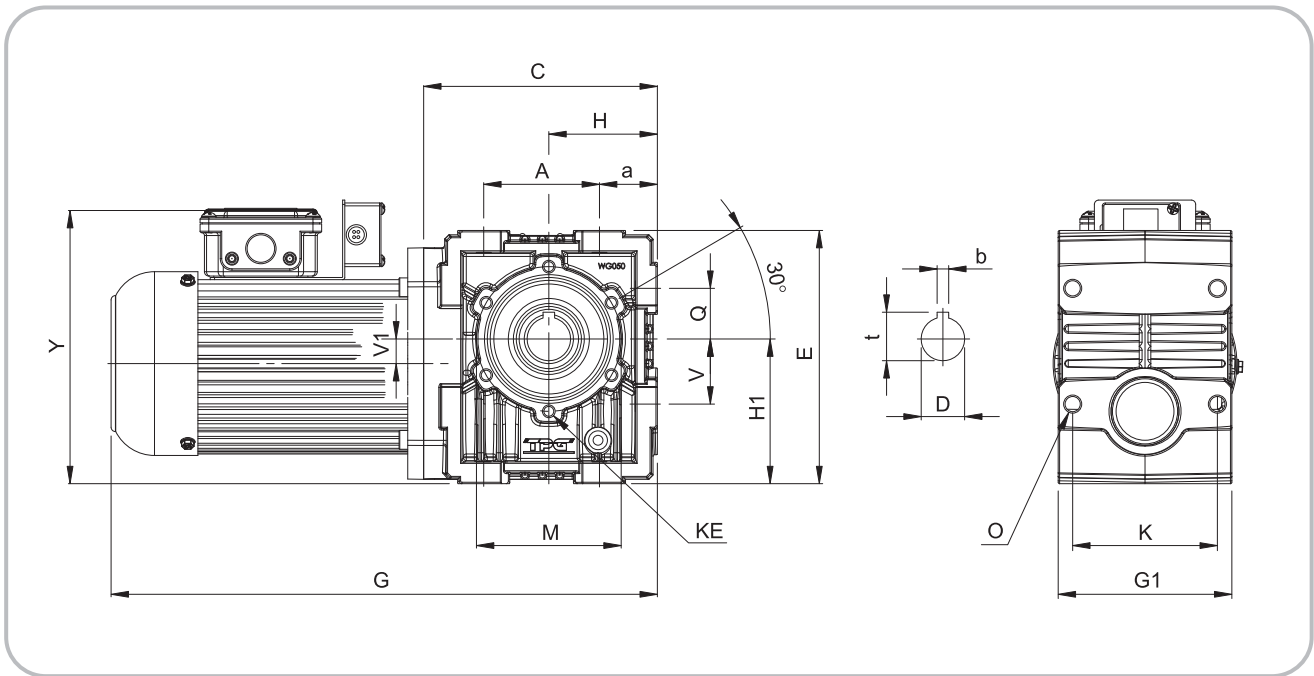
## WGM TYPE

三相馬達附煞車  
3 - Phase with Brake

### 尺寸表 Dimension

mm

馬達 HP	型式 Type	G	腳架尺寸 FOOT DIMENSION					E	H	H1	a	Y	C	V1	KE	M	出力軸端 OUTPUT SHAFT			
			A	K	V	Q	O										G1	D	t	b
0.1KW	WG-050	350.5	80	100	45	35	M12	175	70	100	40	193	161.5	17	M8	100	120	30	33.5	8
	WG-063	366.5	100	110	55	45	M12	192	80	112	35	194	177.5	28	M10	128	150	40	43.3	12
	WG-075	410.5	130	130	70	60	M14	246	106	140	36	250	230.0	37	M12	155	180	45	48.8	14
0.18KW	WG-050	365.5	80	100	45	35	M12	175	70	100	40	193	161.5	17	M8	100	120	30	33.5	8
	WG-063	381.5	100	110	55	45	M12	192	80	112	35	194	177.5	28	M10	128	150	40	43.3	12
	WG-075	425.5	130	130	70	60	M14	246	106	140	36	250	230.0	37	M12	155	180	45	48.8	14
0.37KW	WG-050	380.5	80	80	45	35	M12	175	70	100	40	193	161.5	17	M8	100	120	30	33.5	8
	WG-063	396.5	100	100	55	45	M12	192	80	112	35	194	177.5	28	M10	128	150	40	43.3	12
	WG-075	440.5	130	130	70	60	M14	246	106	140	36	250	230.0	37	M12	155	180	45	48.8	14
0.75KW	WG-063	420.0	100	100	55	45	M12	192	80	112	35	210	177.5	28	M10	128	150	40	43.3	12
	WG-075	472.5	130	130	70	60	M14	246	106	140	36	250	230.0	37	M12	155	180	45	48.8	14
1.5KW	WG-075	522.5	130	130	70	60	M14	246	106	140	36	250	230.0	37	M12	155	180	45	48.8	14



註：

1. 因產品改良或其他因素而造成以上數值有所變更，恕不另行通知。
2. 馬力以4P 50HZ計算。
3. 馬力為可搭配之馬達，實際負荷請參考出力軸轉矩之安全係數做設計或洽詢本公司工程人員

Remark:

1. The specifications are subject to be changed by the manufacturer without prior notice.
2. 4 pole motor at 1450 rpm under 50Hz.
3. The matching motor horsepower of this gear box can be produced by the seller. The actual torque value can be found further from the maker.





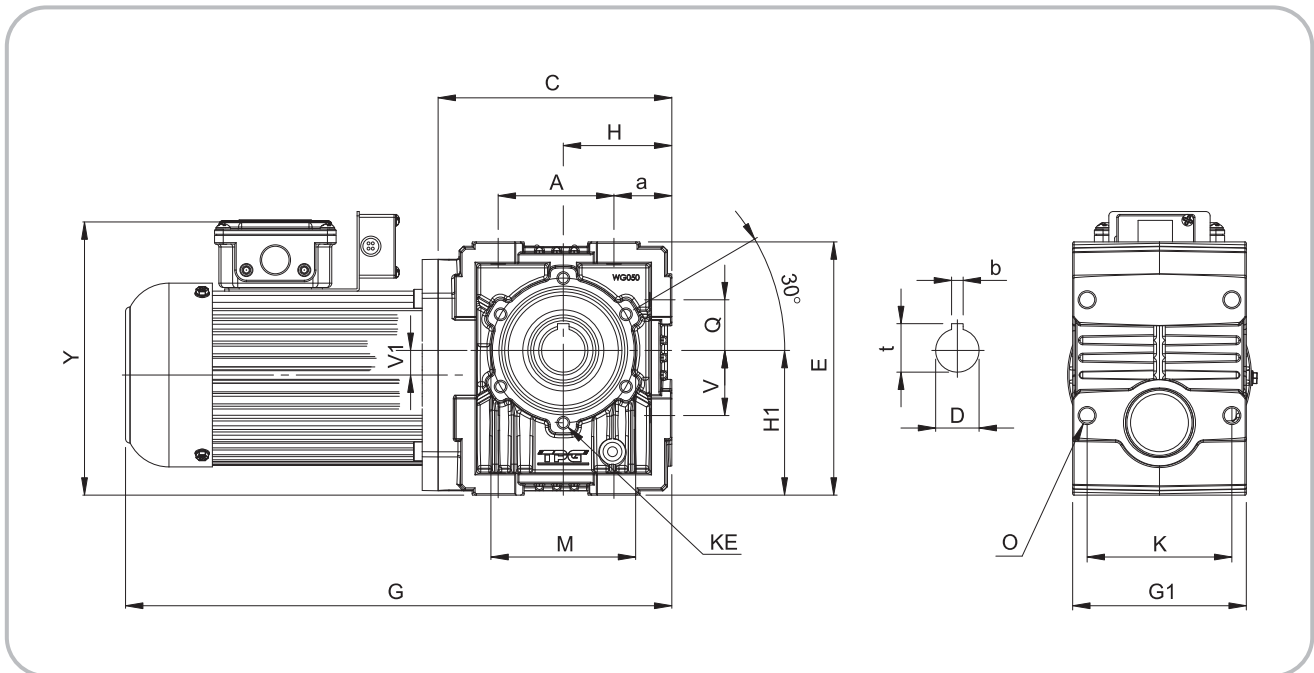
## WGM TYPE

單相馬達附煞車  
1 - Phase with Brake

### 尺寸表 Dimension

mm

馬達 HP	型式 Type	G	腳架尺寸 FOOT DIMENSION					E	H	H1	a	Y	C	V1	KE	M	出力軸端 OUTPUT SHAFT			
			A	K	V	Q	O										G1	D	t	b
0.1KW	WG-050	350.5	80	100	45	35	M12	175	70	100	40	193	161.5	17	M8	100	120	30	33.5	8
	WG-063	366.5	100	110	55	45	M12	192	80	112	35	194	177.5	28	M10	128	150	40	43.3	12
	WG-075	410.5	130	130	70	60	M14	246	106	140	36	250	230.0	37	M12	155	180	45	48.8	14
0.18KW	WG-050	365.5	80	100	45	35	M12	175	70	100	40	193	161.5	17	M8	100	120	30	33.5	8
	WG-063	381.5	100	110	55	45	M12	192	80	112	35	194	177.5	28	M10	128	150	40	43.3	12
	WG-075	425.5	130	130	70	60	M14	246	106	140	36	250	230.0	37	M12	155	180	45	48.8	14

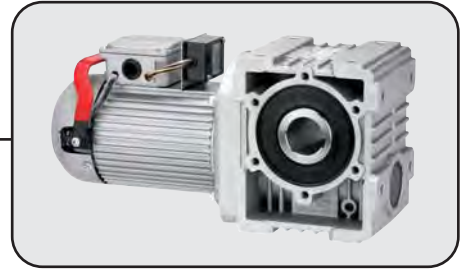


註：

1. 因產品改良或其他因素而造成以上數值有所變更，恕不另行通知。
2. 馬力以4P 50HZ計算。
3. 馬力為可搭配之馬達，實際負荷請參考出力軸轉矩之安全係數做設計或洽詢本公司工程人員

Remark:

1. The specifications are subject to be changed by the manufacturer without prior notice.
2. 4 pole motor at 1450 rpm under 50Hz.
3. The matching motor horsepower of this gear box can be produced by the seller. The actual torque value can be found further from the maker.



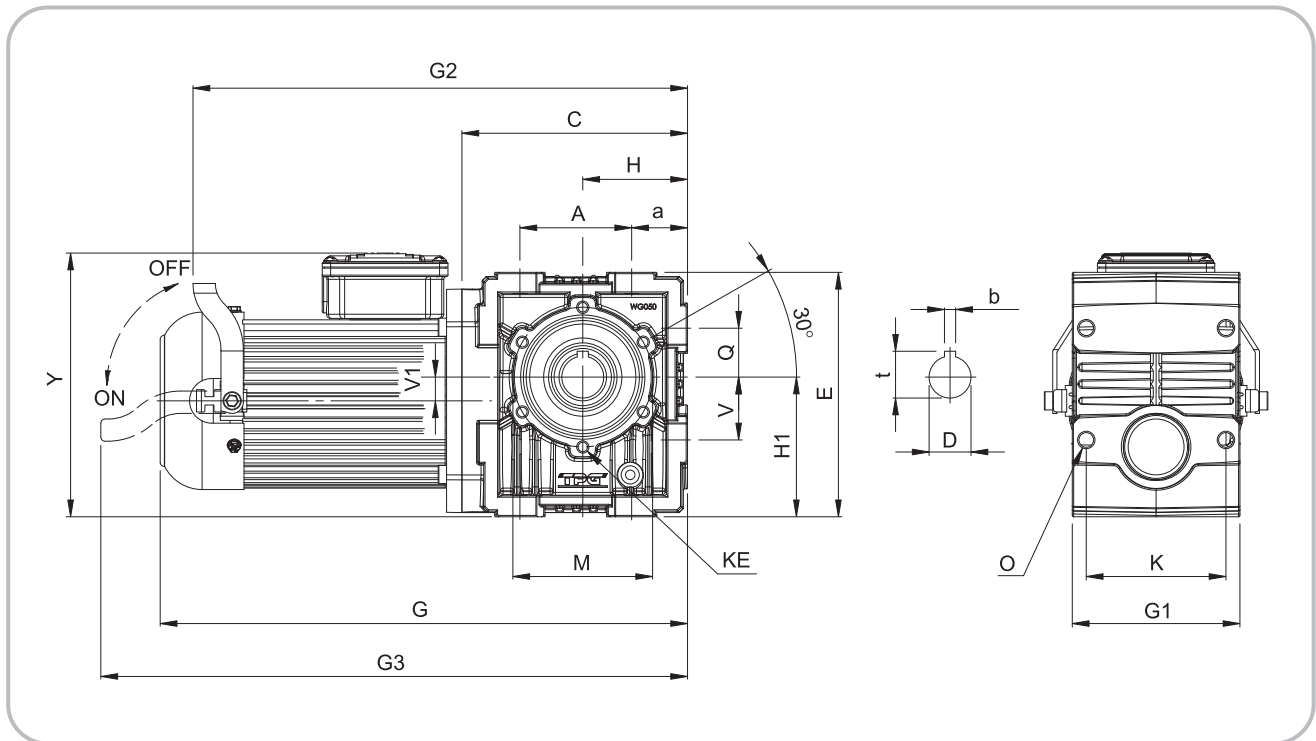
## WGMH TYPE

三相馬達附手釋放煞車  
3 - Phase with Manual Release Brake

尺寸表 Dimension

mm

馬達 HP	型式 Type	G	G2	G3	腳架尺寸 FOOT DIMENSION					E	H	H1	a	Y	C	V1	KE	M	出力軸端 OUTPUT SHAFT			
					A	K	V	Q	O										G1	D	t	b
0.1KW	WG-050	350.5	327.0	383.0	80	100	45	35	M12	175	70	100	40	193	161.5	17	M8	100	120	30	33.5	8
	WG-063	366.5	343.0	399.0	100	110	55	45	M12	192	80	112	35	194	177.5	28	M10	128	150	40	43.3	12
	WG-075	410.5	387.0	443.0	130	130	70	60	M14	246	106	140	36	250	230.0	37	M12	155	180	45	48.8	14
0.18KW	WG-050	365.5	342.0	398.0	80	100	45	35	M12	175	70	100	40	193	161.5	17	M8	100	120	30	33.5	8
	WG-063	381.5	358.0	414.0	100	110	55	45	M12	192	80	112	35	194	177.5	28	M10	128	150	40	43.3	12
	WG-075	425.5	402.0	458.0	130	130	70	60	M14	246	106	140	36	250	230.0	37	M12	155	180	45	48.8	14
0.37KW	WG-050	380.5	357.0	413.0	80	80	45	35	M12	175	70	100	40	193	161.5	17	M8	100	120	30	33.5	8
	WG-063	396.5	373.0	429.0	100	100	55	45	M12	192	80	112	35	194	177.5	28	M10	128	150	40	43.3	12
	WG-075	440.5	417.0	473.0	130	130	70	60	M14	246	106	140	36	250	230.0	37	M12	155	180	45	48.8	14
0.75KW	WG-063	420.0	394.5	481.5	100	100	55	45	M12	192	80	112	35	210	177.5	28	M10	128	150	40	43.3	12
	WG-075	472.5	447.0	534.0	130	130	70	60	M14	246	106	140	36	250	230.0	37	M12	155	180	45	48.8	14
1.5KW	WG-075	522.5	481.5	585.5	130	130	70	60	M14	246	106	140	36	250	230.0	37	M12	155	180	45	48.8	14

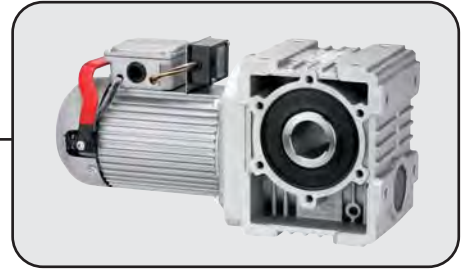


註：

1. 因產品改良或其他因素而造成以上數值有所變更，恕不另行通知。
2. 馬力以4P 50HZ計算。
3. 馬力為可搭配之馬達，實際負荷請參考出力軸轉矩之安全係數做設計或洽詢本公司工程人員

Remark:

1. The specifications are subject to be changed by the manufacturer without prior notice.
2. 4 pole motor at 1450 rpm under 50Hz.
3. The matching motor horsepower of this gear box can be produced by the seller. The actual torque value can be found further from the maker.

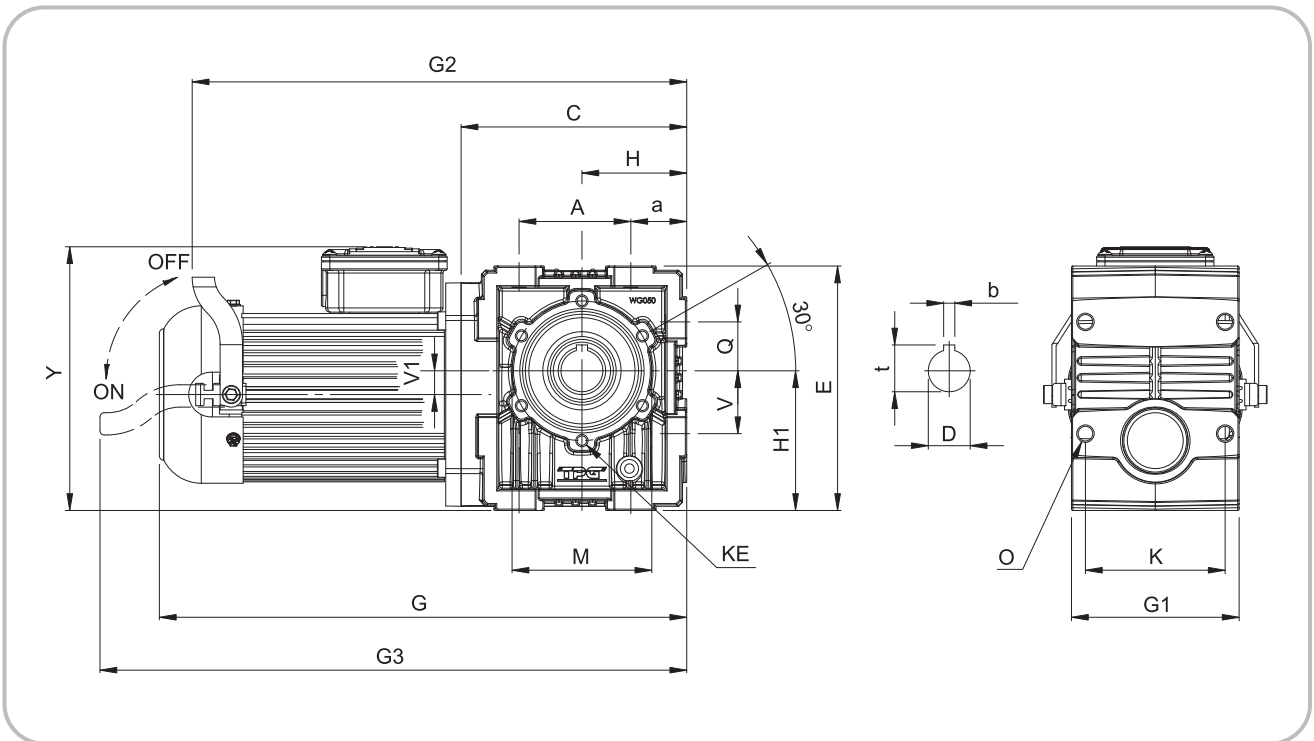


### WGMH TYPE 單相馬達附手釋放煞車 1 - Phase with Manual Release Brake

#### 尺寸表 Dimension

mm

馬達 HP	型式 Type	G	G2	G3	腳架尺寸 FOOT DIMENSION					E	H	H1	a	Y	C	V1	KE	M	出力軸端 OUTPUT SHAFT			
					A	K	V	Q	O										G1	D	t	b
0.1KW	WG-050	350.5	327.0	383.0	80	100	45	35	M12	175	70	100	40	193	161.5	17	M8	100	120	30	33.5	8
	WG-063	366.5	343.0	399.0	100	110	55	45	M12	192	80	112	35	194	177.5	28	M10	128	150	40	43.3	12
	WG-075	410.5	387.0	443.0	130	130	70	60	M14	246	106	140	36	250	230.0	37	M12	155	180	45	48.8	14
0.18KW	WG-050	365.5	342.0	398.0	80	100	45	35	M12	175	70	100	40	193	161.5	17	M8	100	120	30	33.5	8
	WG-063	381.5	358.0	414.0	100	110	55	45	M12	192	80	112	35	194	177.5	28	M10	128	150	40	43.3	12
	WG-075	425.5	402.0	458.0	130	130	70	60	M14	246	106	140	36	250	230.0	37	M12	155	180	45	48.8	14

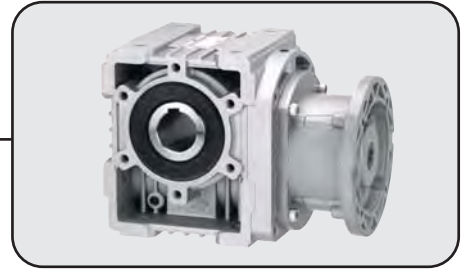


註：

1. 因產品改良或其他因素而造成以上數值有所變更，恕不另行通知。
2. 馬力以4P 50HZ計算。
3. 馬力為可搭配之馬達，實際負荷請參考出力軸轉矩之安全係數做設計或洽詢本公司工程人員

Remark:

1. The specifications are subject to be changed by the manufacturer without prior notice.
2. 4 pole motor at 1450 rpm under 50Hz.
3. The matching motor horsepower of this gear box can be produced by the seller. The actual torque value can be found further from the maker.

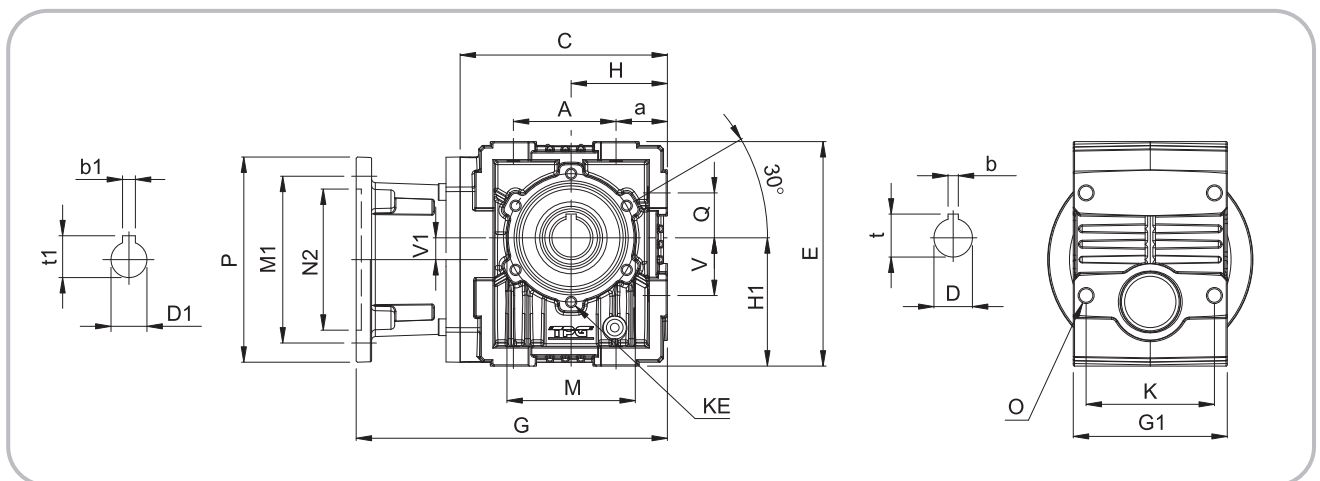


### WGS TYPE

尺寸表 Dimension

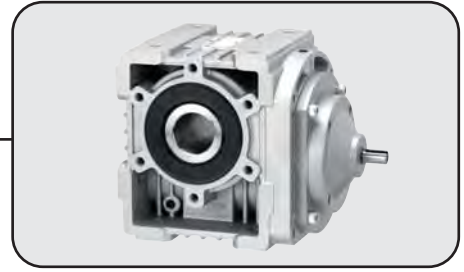
mm

馬達 HP	型式 Type	框號 IEC B5	G	腳架尺寸 FOOT DIMENSION					E	H	H1	a	C	V1	KE	M	出力軸端 OUTPUT SHAFT				入力軸端 INPUT SHAFT					
				A	K	V	Q	O									G1	D	t	b	P	M1	N2	D1	t	b1
0.1KW	WG-050	63	242.5	80	100	45	35	M12	175	70	100	40	161.5	17	M8	100	120	30	33.5	8	140	115	95	11	12.8	4
		71M	242.5	80	100	45	35	M12	175	70	100	40	161.5	17	M8	100	120	30	33.5	8	160	130	110	11	12.8	4
		71	242.5	80	100	45	35	M12	175	70	100	40	161.5	17	M8	100	120	30	33.5	8	160	130	110	14	16.3	5
	WG-063	63	269.0	100	110	55	45	M12	192	80	112	35	177.5	28	M10	128	150	40	43.3	12	140	115	95	11	12.8	4
		71M	269.0	100	110	55	45	M12	192	80	112	35	177.5	28	M10	128	150	40	43.3	12	160	130	110	11	12.8	4
		71	269.0	100	110	55	45	M12	192	80	112	35	177.5	28	M10	128	150	40	43.3	12	160	130	110	14	16.3	5
	WG-075	63	322.5	130	130	70	60	M14	246	106	140	36	230.0	37	M12	155	180	45	48.8	14	140	115	95	11	12.8	4
		71M	322.5	130	130	70	60	M14	246	106	140	36	230.0	37	M12	155	180	45	48.8	14	160	130	110	11	12.8	4
		71	322.5	130	130	70	60	M14	246	106	140	36	230.0	37	M12	155	180	45	48.8	14	160	130	110	14	16.3	5
0.18KW	WG-050	63	242.5	80	100	45	35	M12	175	70	100	40	161.5	17	M8	100	120	30	33.5	8	140	115	95	11	12.8	4
		71M	242.5	80	100	45	35	M12	175	70	100	40	161.5	17	M8	100	120	30	33.5	8	160	130	110	11	12.8	4
		71	242.5	80	100	45	35	M12	175	70	100	40	161.5	17	M8	100	120	30	33.5	8	160	130	110	14	16.3	5
	WG-063	63	269.0	100	110	55	45	M12	192	80	112	35	177.5	28	M10	128	150	40	43.3	12	140	115	95	11	12.8	4
		71M	269.0	100	110	55	45	M12	192	80	112	35	177.5	28	M10	128	150	40	43.3	12	160	130	110	11	12.8	4
		71	269.0	100	110	5	45	M12	192	80	112	35	177.5	28	M10	128	150	40	43.3	12	160	130	110	14	16.3	5
	WG-075	63	322.5	130	130	70	60	M14	246	106	140	36	230.0	37	M12	155	180	45	48.8	14	140	115	95	11	12.8	4
		71M	322.5	130	130	70	60	M14	246	106	140	36	230.0	37	M12	155	180	45	48.8	14	160	130	110	11	12.8	4
		71	322.5	130	130	70	60	M14	246	106	140	36	230.0	37	M12	155	180	45	48.8	14	160	130	110	14	16.3	5
0.37KW	WG-050	71	242.5	80	100	45	35	M12	175	70	100	40	161.5	17	M8	100	120	30	33.5	8	160	130	110	14	16.3	5
	WG-063	71	269.0	100	110	55	45	M12	192	80	112	35	177.5	28	M10	128	150	40	43.3	12	160	130	110	14	16.3	5
	WG-075	71	322.5	130	130	70	60	M14	246	106	140	36	230.0	37	M12	155	180	45	48.8	14	160	130	110	14	16.3	5
0.75KW	WG-063	80	286.0	100	110	55	45	M12	192	80	112	35	177.5	28	M10	128	150	40	43.3	12	200	165	130	19	21.8	6
	WG-075	80	339.5	130	130	70	60	M14	246	106	140	36	230.0	37	M12	155	180	45	48.8	14	200	165	130	19	21.8	6
1.5KW	WG-075	90	339.5	130	130	70	60	M14	246	106	140	36	230.0	37	M12	155	180	45	48.8	14	200	165	130	24	27.3	8



註： 1.因產品改良或其他因素而造成以上數值有所變更，恕不另行通知。  
 2.馬力以4P 50HZ計算。  
 3.馬力為可搭配之馬達，實際負荷請參考出力軸轉矩之安全係數做設計或洽詢本公司工程人員。  
 4.訂購1/8HP或1/4HP減速機特別注意安裝法蘭尺寸，訂單上請註明框號。

Remark:  
 1. The specifications are subject to be changed by the manufacturer without prior notice.  
 2. 4 pole motor at 1450 rpm under 50Hz.  
 3. The matching motor horsepower of this gear box can be produced by the seller. The actual torque value can be found further from the maker.  
 4. Please advise the seller the detail IEC flange size & bore dimension while your ordering the gear boxes, which should be jointed with 1/8HP or 1/4HP AC motor.

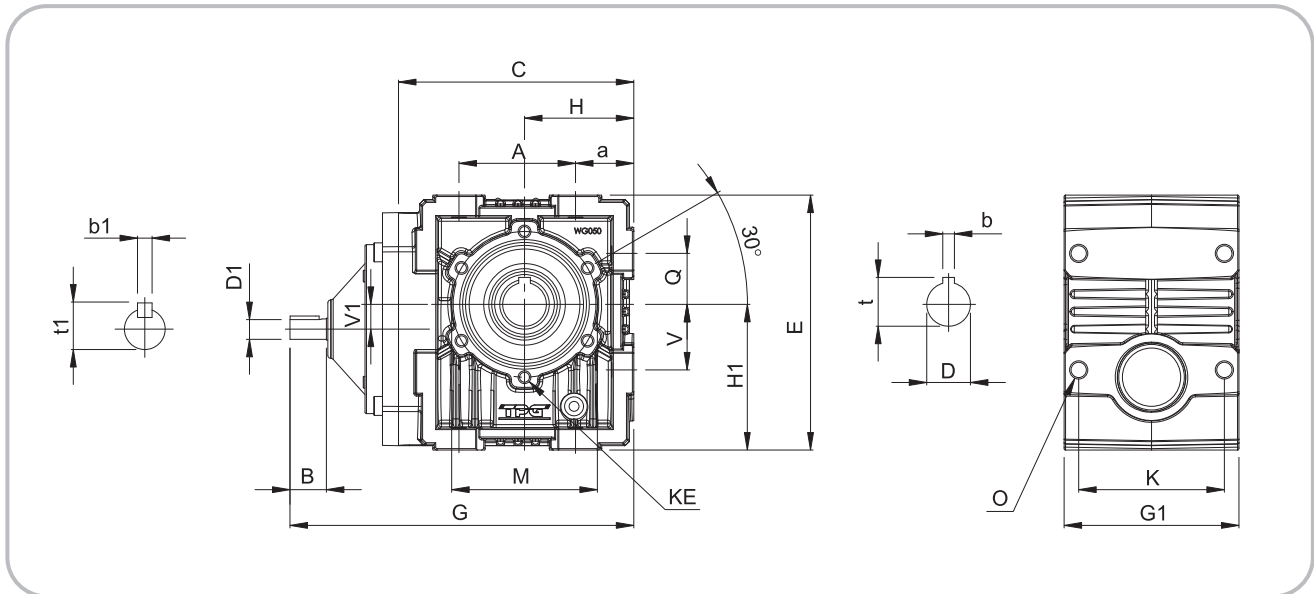


## WGD TYPE

### 尺寸表 Dimension

mm

馬達 HP	型式 Type	G	腳架尺寸 FOOT DIMENSION					E	H	H1	a	C	V1	KE	M	出力軸端 OUTPUT SHAFT				入力軸端 INPUT SHAFT			
			A	K	V	Q	O									G1	D	t	b	B	D1	t1	b1
0.1KW	WG-050	236.0	80	100	45	35	M12	175	70	100	40	161.5	17	M8	100	120	30	33.5	8	25	14	15.5	4
	WG-063	264.0	100	110	55	45	M12	192	80	112	35	177.5	28	M10	128	150	40	43.3	12	25	14	15.5	4
	WG-075	327.0	130	130	70	60	M14	246	106	140	36	230.0	37	M12	155	180	45	48.8	14	25	14	15.5	4
0.18KW	WG-050	236.0	80	100	45	35	M12	175	70	100	40	161.5	17	M8	100	120	30	33.5	8	25	14	15.5	4
	WG-063	264.0	100	110	55	45	M12	192	80	112	35	177.5	28	M10	128	150	40	43.3	12	25	14	15.5	4
	WG-075	327.0	130	130	70	60	M14	246	106	140	36	230.0	37	M12	155	180	45	48.8	14	25	14	15.5	4
0.37KW	WG-050	236.0	80	100	45	35	M12	175	70	100	40	161.5	17	M8	100	120	30	33.5	8	25	14	15.5	4
	WG-063	264.0	100	110	55	45	M12	192	80	112	35	177.5	28	M10	128	150	40	43.3	12	25	14	15.5	4
	WG-075	327.0	130	130	70	60	M14	246	106	140	36	230.0	37	M12	155	180	45	48.8	14	25	14	15.5	4
0.75KW	WG-063	296.5	100	110	55	45	M12	192	80	112	35	177.5	28	M10	128	150	40	43.3	12	30	19	21	5
	WG-075	350.0	130	130	70	60	M14	246	106	140	36	230.0	37	M12	155	180	45	48.8	14	30	19	21	5
1.5KW	WG-075	409.5	130	130	70	60	M14	246	106	140	36	230.0	37	M12	155	180	45	48.8	14	35	24	27	7

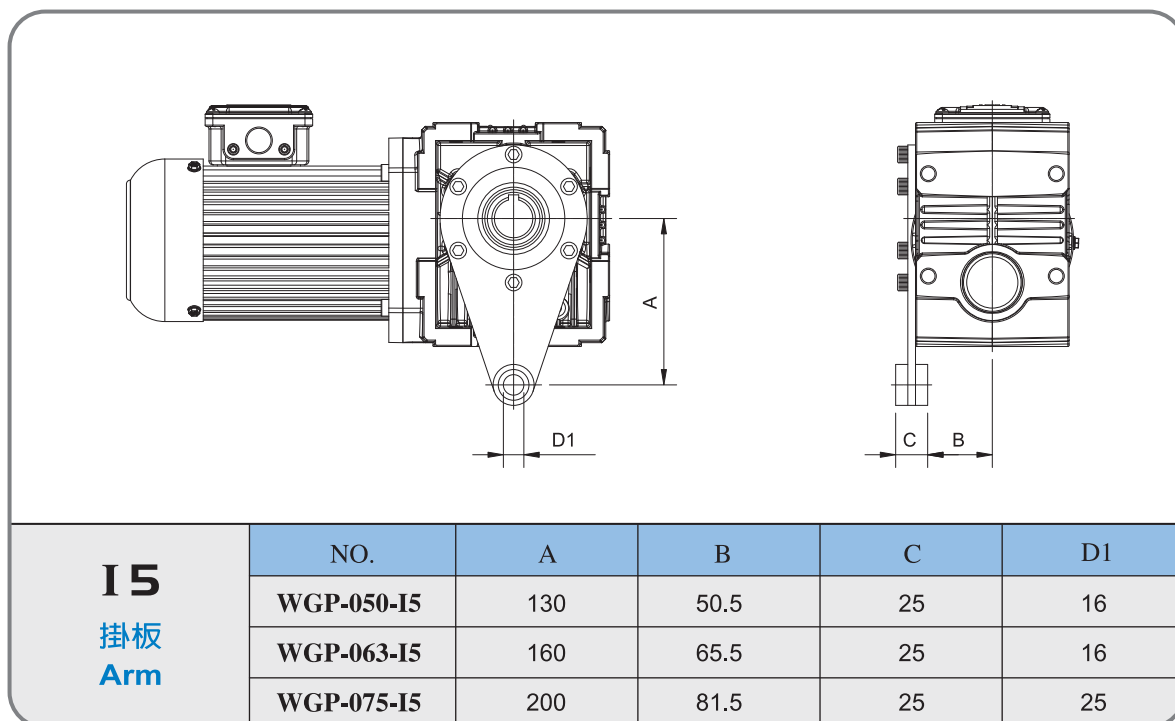
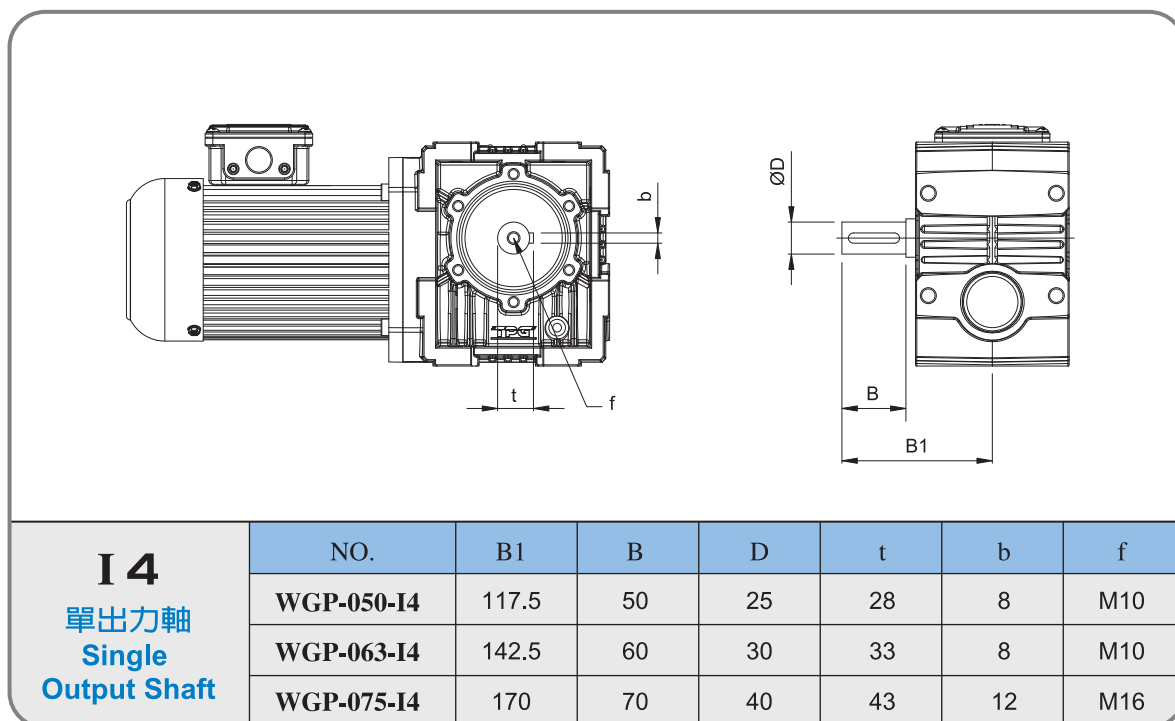


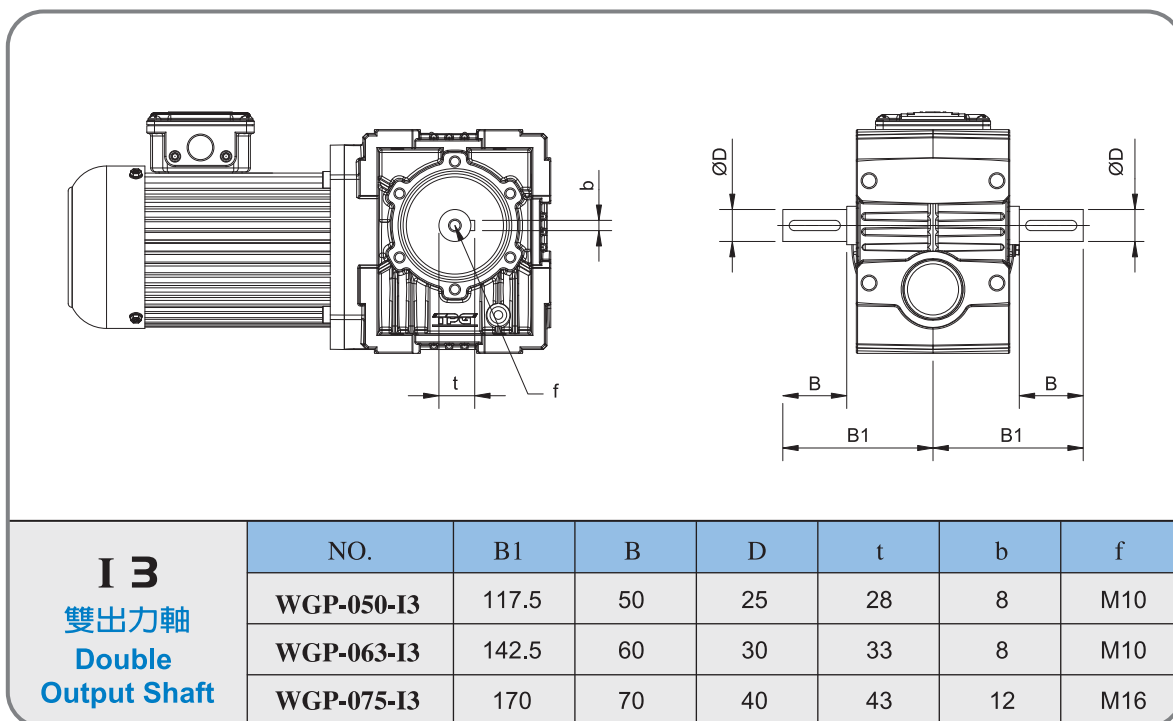
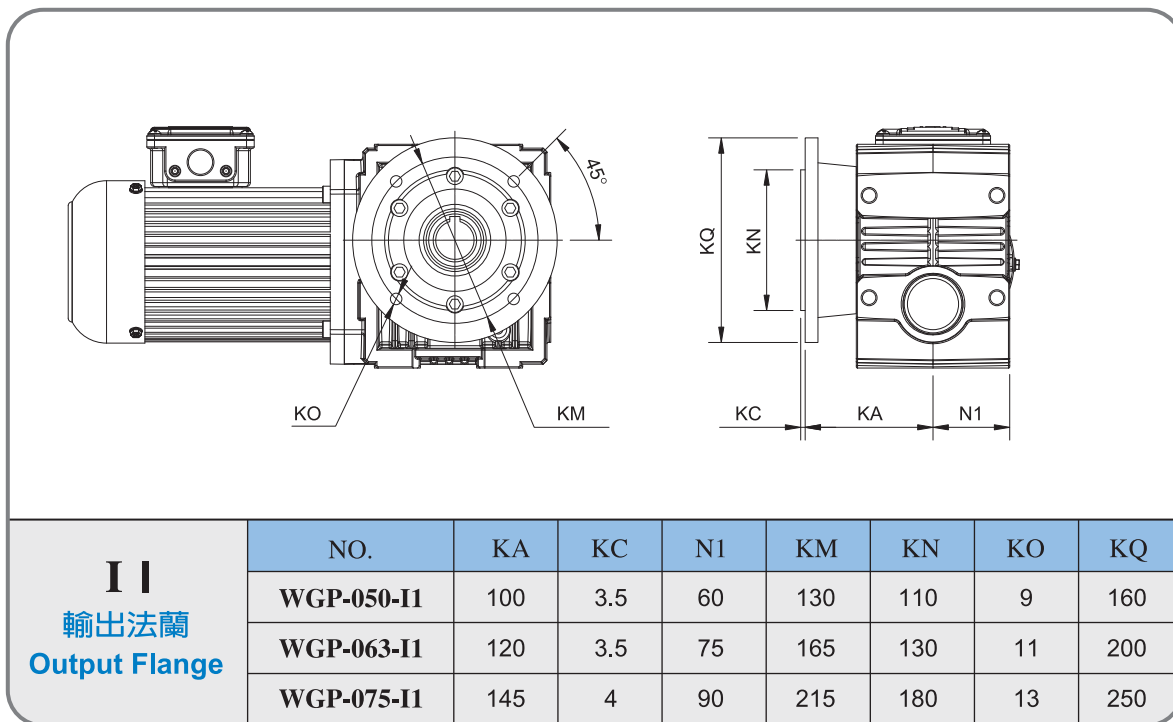
註：

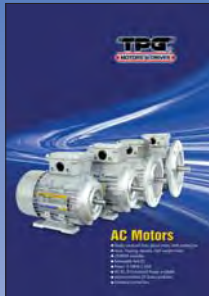
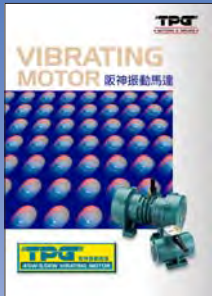
1. 因產品改良或其他因素而造成以上數值有所變更，恕不另行通知。
2. 馬力以4P 50HZ計算。
3. 馬力為可搭配之馬達，實際負荷請參考出力軸轉矩之安全係數做設計或洽詢本公司工程人員

Remark:

1. The specifications are subject to be changed by the manufacturer without prior notice.
2. 4 pole motor at 1450 rpm under 50Hz.
3. The matching motor horsepower of this gear box can be produced by the seller. The actual torque value can be found further from the maker.







**HEAD OFFICE:**  
**TAIWAN PRECISION GEAR CORP**  
 TEL: 886-4-25351329 FAX: 886-4-25351467  
 E-mail: tpgcorp@ms13.hinet.net

**BRANCH:**

**(CHINA)**  
**TPG MOTORS & DRIVES (CHINA) CO.LTD**  
 TEL: 86-769-22335207 FAX: 86-769-22335203  
 E-mail: tpg\_cn@yahoo.com.tw

**(THAILAND)**  
**TPG MOTORS & DRIVES (THAILAND) CO.LTD.**  
 TEL:66-2-2778878 FAX:66-2-2779788  
 E-mail: tpg\_th@yahoo.com

**(VIETNAM)**  
**TPG VIETNAM AGENT**  
 TEL: 84-8-7503001 FAX: 84-8-7503005  
 E-mail: universaltrade@hcm.vnn.vn

**(INDIA)**  
**TPG MOTORS & DRIVES (INDIA) PVT. LTD.**  
 TEL: 91-44-23634199 FAX:91-44-23634299  
 E-mail: tpg\_in@yahoo.com

**(MALAYSIA)**  
**TPG MOTORS & DRIVES (MALAYSIA) SDN BHD**  
 TEL:60-3-90743686 FAX:60-3-90767866  
 E-mail: tpg\_ma@yahoo.com

**(INDONESIA)**  
**TPG MOTORS & DRIVES (INDONESIA) CO.LTD**  
 TEL:62-21-45846725 FAX:62-21-45846726  
 E-mail: tpg\_ind@yahoo.com

**(SINGAPORE)**  
**TPG MOTORS & DRIVES (SINGAPORE) PTE LTD**  
 TEL:65-62456007 FAX:65-62456017  
 E-mail: tpgsin@singnet.com.sg